

QuMax Omni for Teltonika RUTX50

INTEGRATED MULTI-BAND LTE & 5G OMNI ANTENNA + Wi-Fi ANTENNA + GPS + PLACE TO INSTALL TELTONIKA RUTX50 (ALL-IN-ONE)

QuMax Omni is a 5G omnidirectional MIMO 4x4 antenna for the Teltonika RUTX50 router. The antenna covers a wide frequency range from 617MHz (Band71) to 3.8GHz. Apart from 5G, also Wi-Fi and GPS antennas are included, which means you get an all-in-one solution for your RUTX50.

Additional router compartment inside the housing creates a variety of new outdoor (IP67) scenarios. It is recommended for moving applications, like trains, buses, yachts or campers, but also to improve signal quality in rural areas.

NOTE! The antenna doesn't support B 32 band and n 77 above 3800 MHz band!



PASSIVE POE SUPPORT



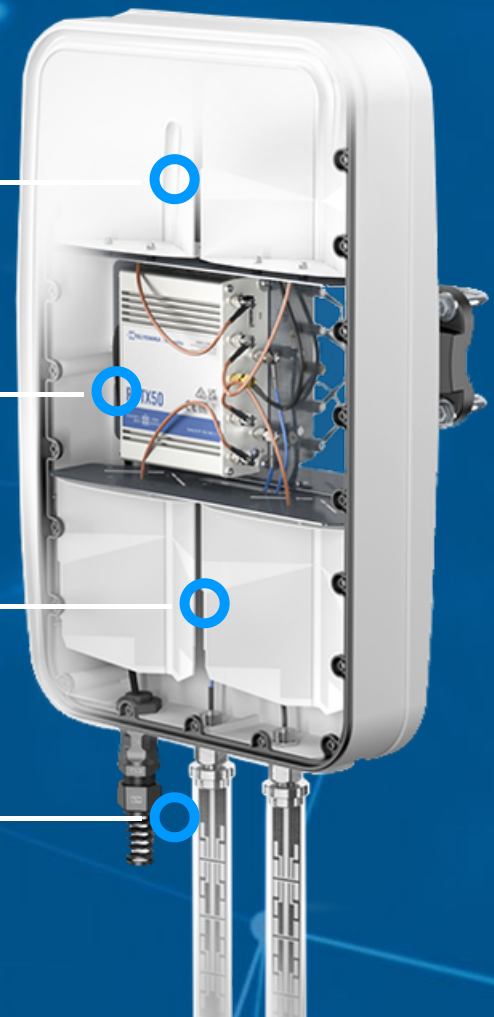
ANTENNA PERFECTLY MATCHED WITH THE ROUTER



OUTDOOR ANTENNA WORKS IN ANY WEATHER CONDITIONS, IP67



MADE IN EUROPE



5G / LTE ANTENNA SPECIFICATION

FREQUENCY	0.617 - 0.96 GHz 1.7 - 2.2 GHz 2.2 - 2.7 GHz 3.3 - 3.8 GHz
GAIN	0.617 - 0.96 GHz: 3 dBi 1.7 - 2.2 GHz: 3,5 dBi 2.3 - 2.7 GHz: 3,5 dBi 3.3 - 3.8 GHz: 4 dBi
SUPPORTED LTE BANDS	1, 2, 3, 4, 5, 7, 8, 9, 10, 12, 13, 14, 17, 18, 19, 20, 22, 25, 26, 27, 28, 29, 30, 33, 34, 35, 36, 37, 38, 39, 40, 41, 42, 43, 44, 48, 49, 52, 53, 65, 66, 67, 68, 69, 71, 85, 103, 106
SUPPORTED 5G BANDS	n1, n2, n3, n5, n7, n8, n12, n13, n14, n18, n20, n25, n26, n28, n29, n30, n34, n38, n39, n40, n41, n48, n53, n65, n66, n67, n71, n78, n80, n81, n82, n83, n84, n85, n86, n89, n90, n95, n97, n98, n100, n101, n255
VSWR	<1.80, max <2.00
BEAMWIDTH	360°/35° ±5°
POLARIZATION	Vertical
IMPEDANCE	50 Ω

WI-FI ANTENNA SPECIFICATION

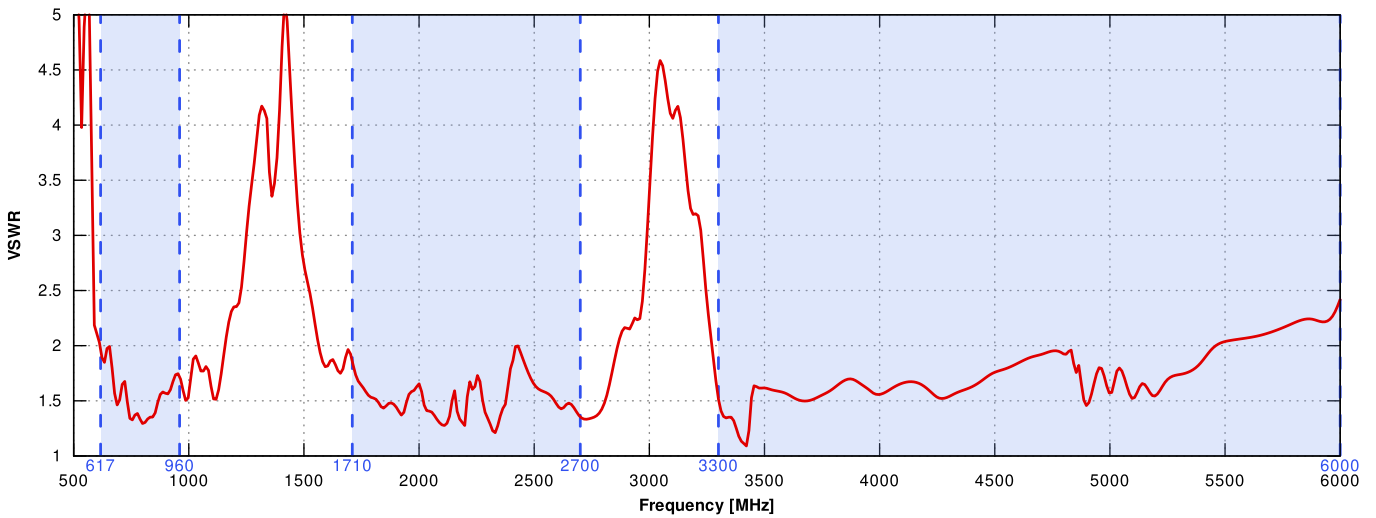
FREQUENCY	2.40 - 2.50 GHz 4.70 - 6.00 GHz
GAIN	2.40 - 2.50 GHz : 6 dBi 4.70 - 6.00 GHz : 7 dBi
VSWR	<1.70, max <2.00
BEAMWIDTH	360°/25° ±5°
POLARIZATION	Vertical
IMPEDANCE	50 Ω

MECHANICAL SPECIFICATION

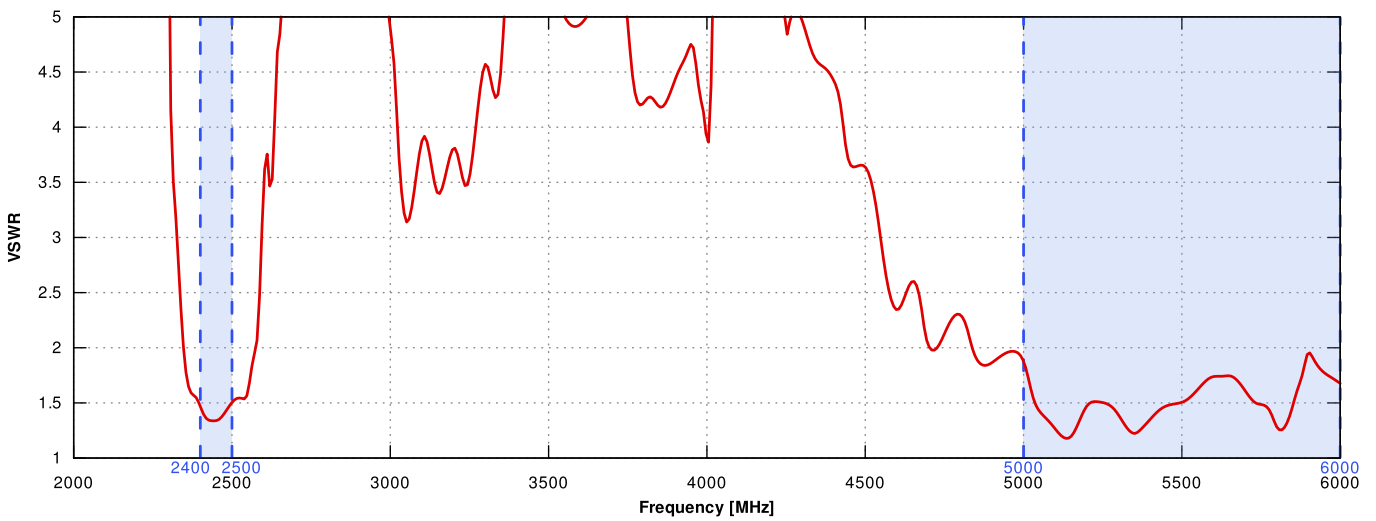
MATERIALS	ABS, aluminum, PTFE, Fiberglass
CONNECTOR TYPE	RJ45
INGRESS PROTECTION	IP67
DIMENSIONS	486.0 x 292.2 x 105.6 mm 19.13 x 11.50 x 4.16 inch
WEIGHT	2.5 kg 5.51 lbs
OPERATING TEMPERATURE	From -40°C to 70°C From -40°F to 167°F
MAST DIAMETER	25-60mm 0.98-2.36 inch

PLOTS

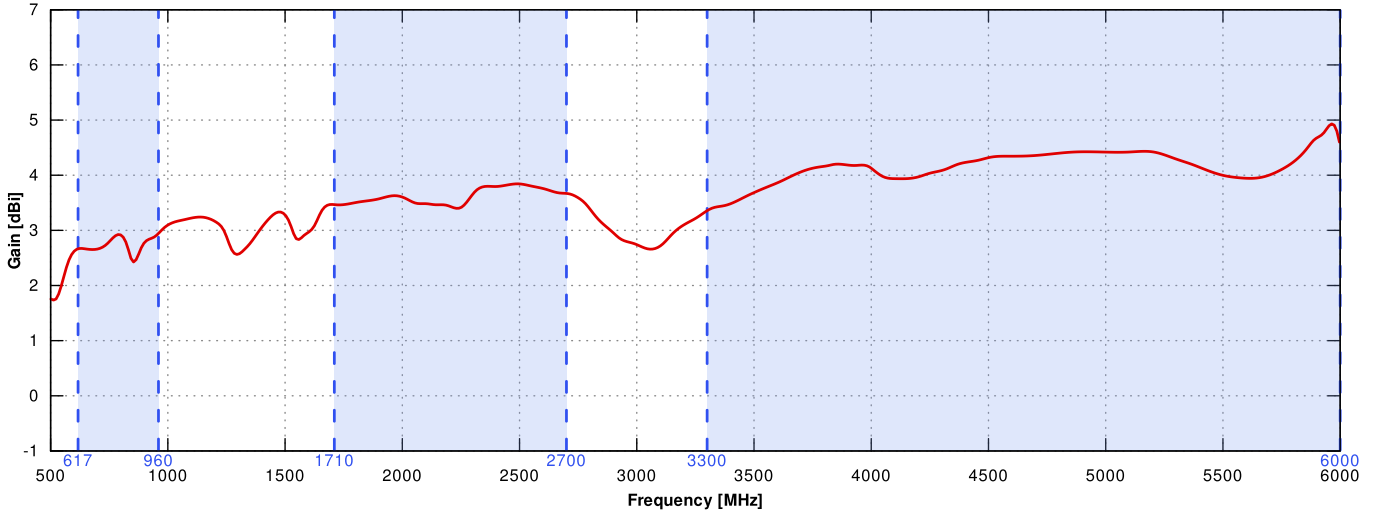
VSWR for LTE antenna



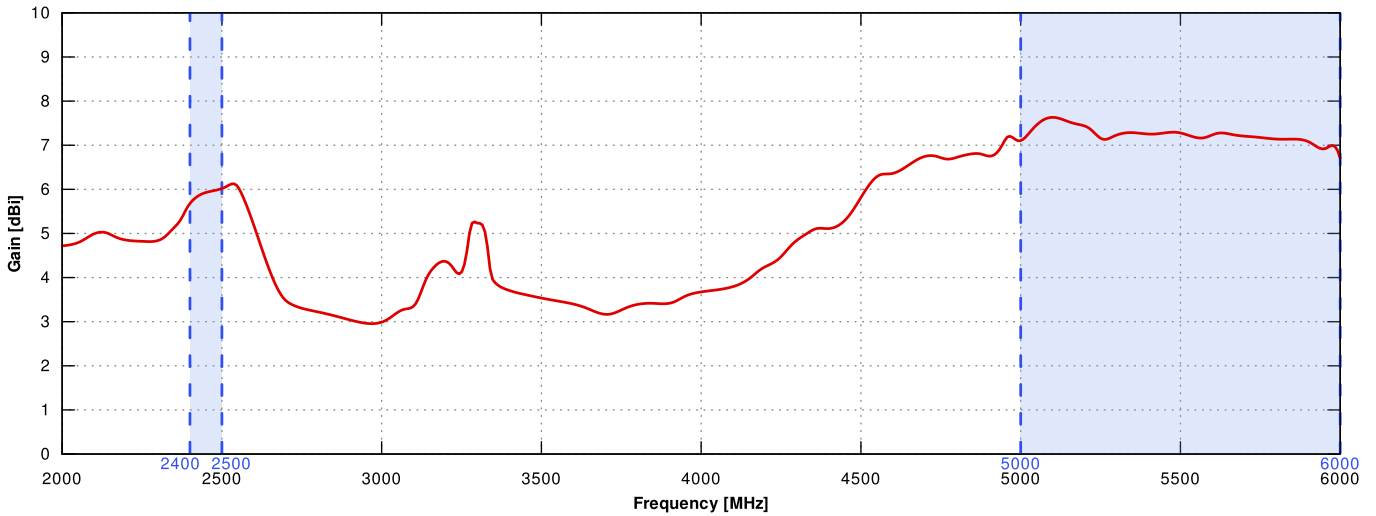
VSWR for Wi-Fi antenna



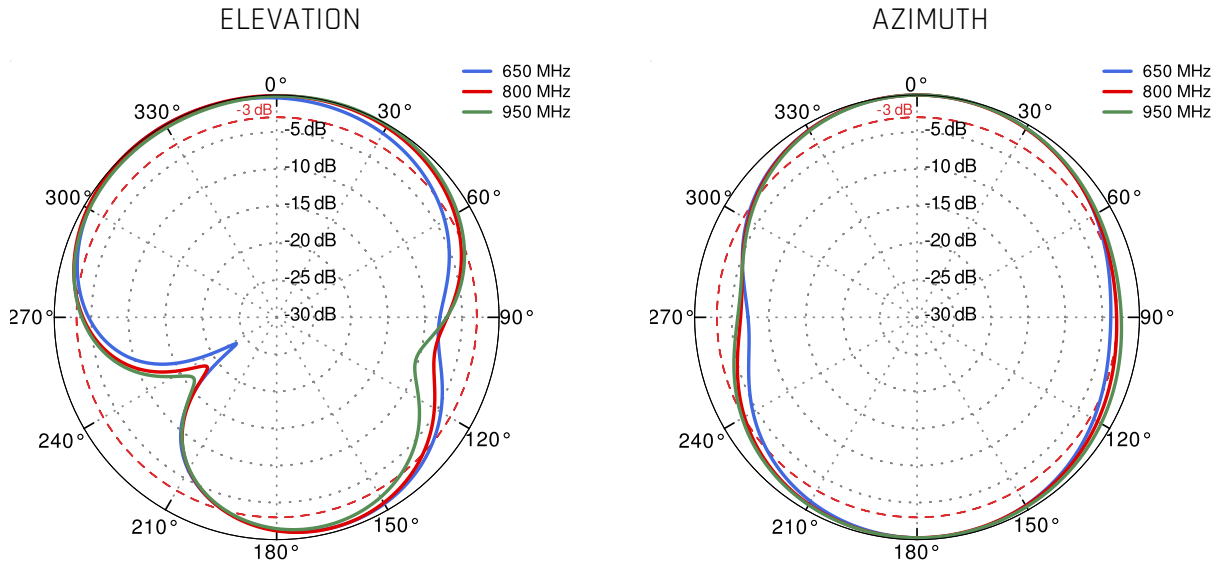
Gain for LTE antenna



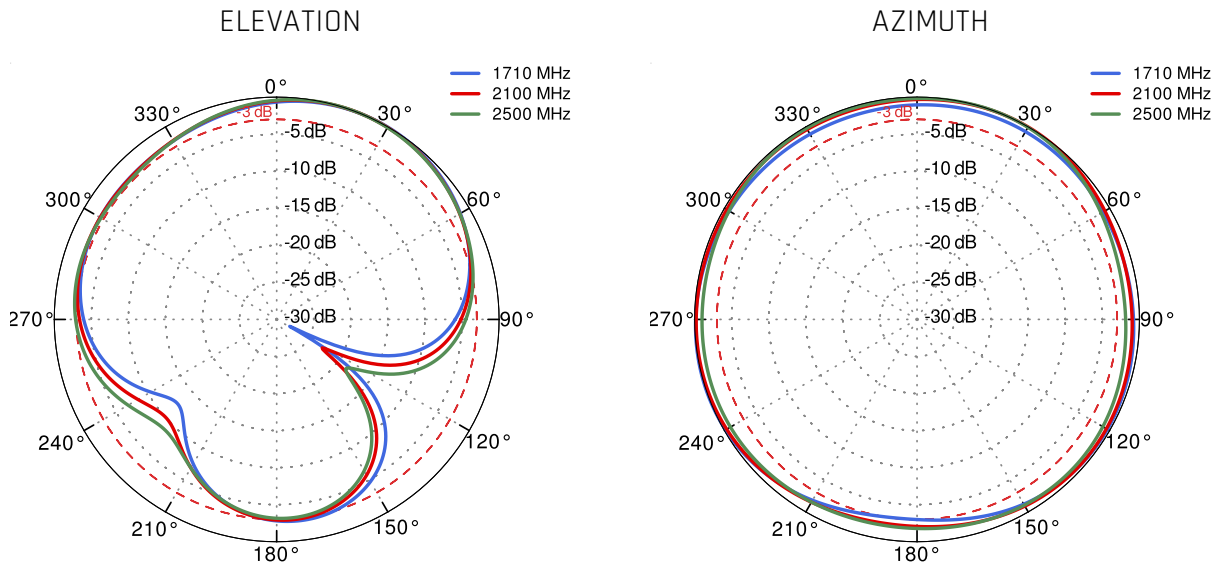
Gain for Wi-Fi antenna



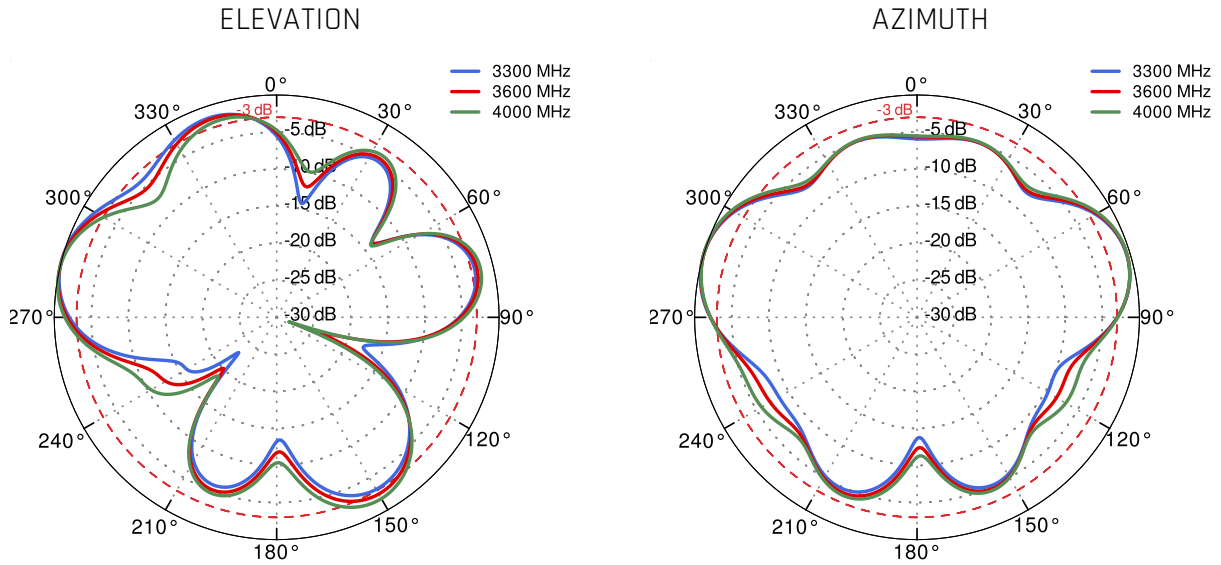
5G/LTE from 650MHz to 950MHz



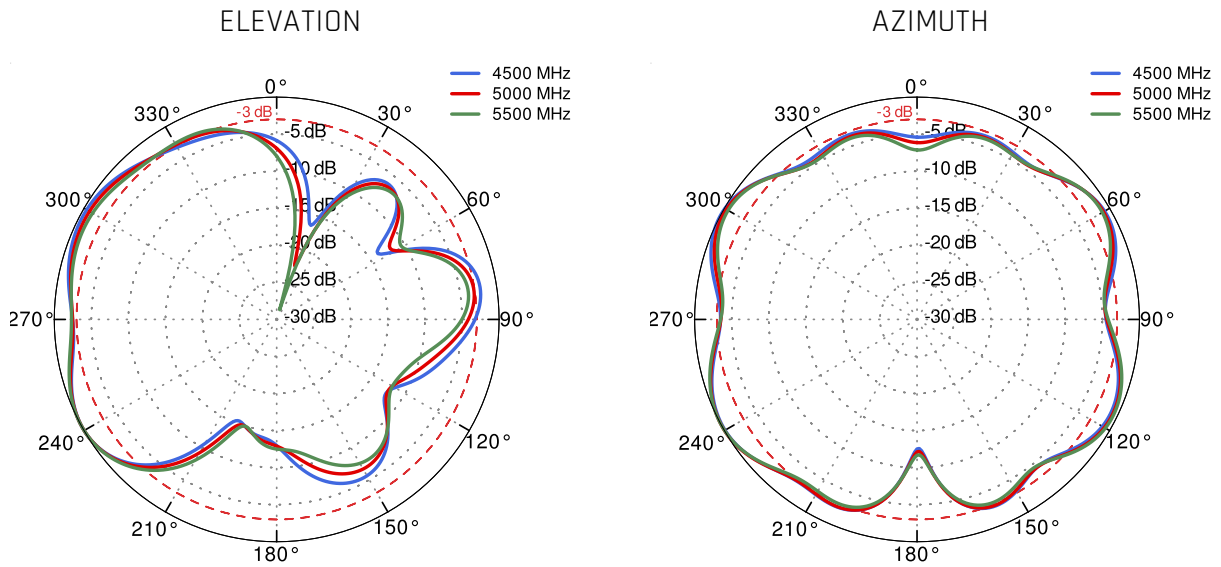
5G/LTE from 1.71GHz to 2.5GHz



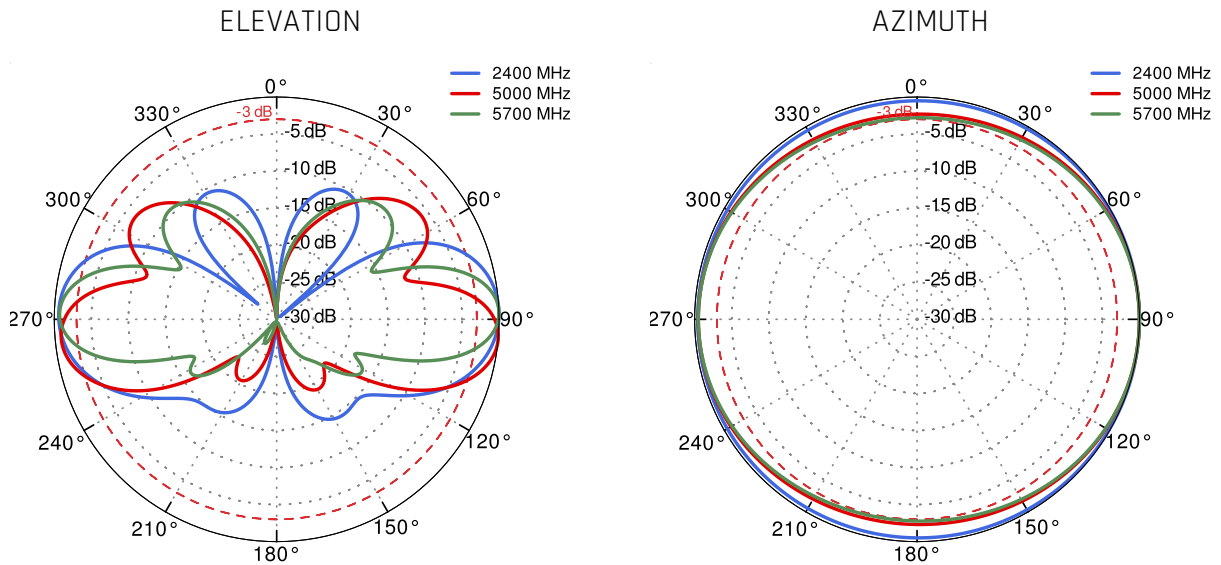
5G/LTE from 3.3GHz to 4.0GHz



5G/LTE from 4.5GHz to 5.5GHz



Wi-Fi 2.4GHz and 5GHz



DIMENSIONS

