

# QuSpot LTE MIMO 4x4

## INTEGRATED MULTI-BAND LTE OMNI ANTENNA + PLACE TO INSTALL ROUTERBOARD WITH MODEM

QuSpot 4x4 omnidirectional LTE outdoor antenna for LTE modems. It's primary designed for LTE/3G/2G 4x4 modems. The antenna can be used for the most popular LTE bands (e.g. 3,7,20), frequencies 694-2700 MHz. The mounting bracket allows the antenna to be installed on the pole or on the wall. It features a special place inside to mount your own electronics. The antenna is equipped with MHF4 connectors (There is no specific order for cable connection).

**4G**  
LTE  
**694-2700MHz**  
**OMNI**  
DIRECTIONAL  
**IP 68**  
**-40° TO +80°**

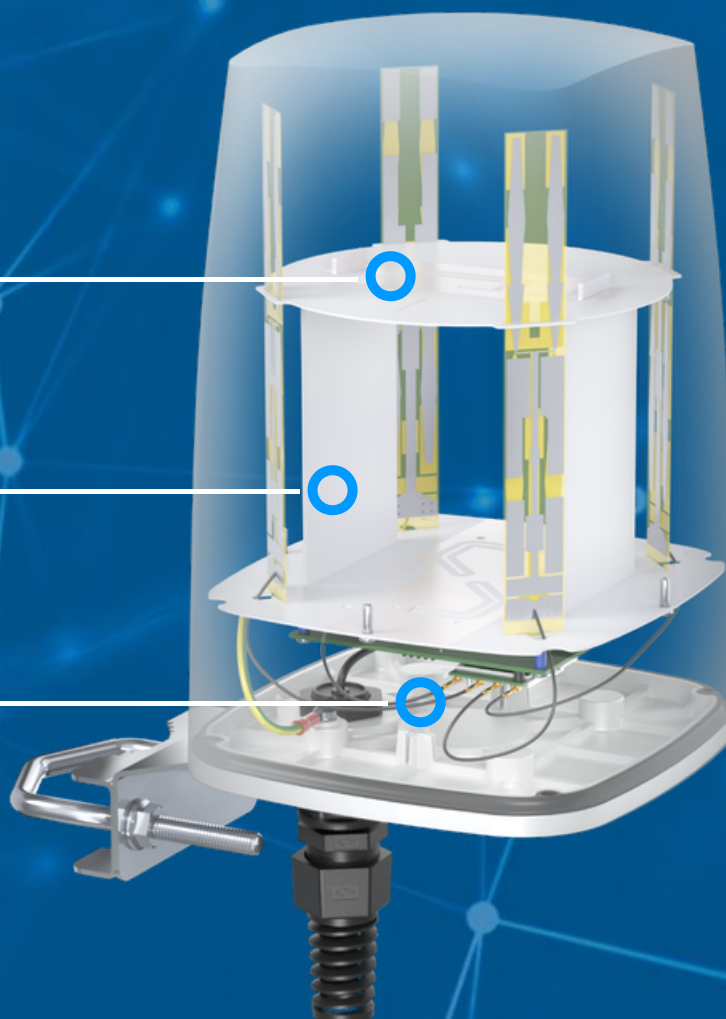
OUTDOOR ANTENNA WORKS IN ANY  
WEATHER CONDITIONS, IP68



GALVANIZED STEEL, WALL OR POLE  
MOUNTING BRACKET



MADE IN EUROPE



## LTE ANTENNA SPECIFICATION

FREQUENCY	694 - 960 MHz 1.7 - 2.2 GHz 2.5 - 2.7 GHz
GAIN	694 - 960 MHz : 2 dBi 1.7 - 2.2 GHz : 2 dBi 2.5 - 2.7 GHz : 3 dBi
VSWR	<1.50, max <2.50
BEAMWIDTH	360°/25° ±5°
POLARIZATION	Vertical
IMPEDANCE	50 $\Omega$

## MECHANICAL SPECIFICATION

MATERIALS	ABS, aluminum, PTFE
CONNECTOR TYPE	MHF4
INGRESS PROTECTION	IP68
DIMENSIONS	160 x 160 x 240 mm 6.3 x 6.3 x 9.45 inch
WEIGHT	1.5 kg 3.31 lbs
OPERATING TEMPERATURE	From -40°C to 80°C From -40°F to 176°F
MAST DIAMETER	40-60 mm 1.57-2.36 inch

## FREQUENCY BANDS

**LTE / 4G GSM**

	5	8	12	13	14	17	18	
617	19	20	26	27	28	29	44	960
MHz	67	68	85	103	n81	n82	n83	MHz
	n89	n100						

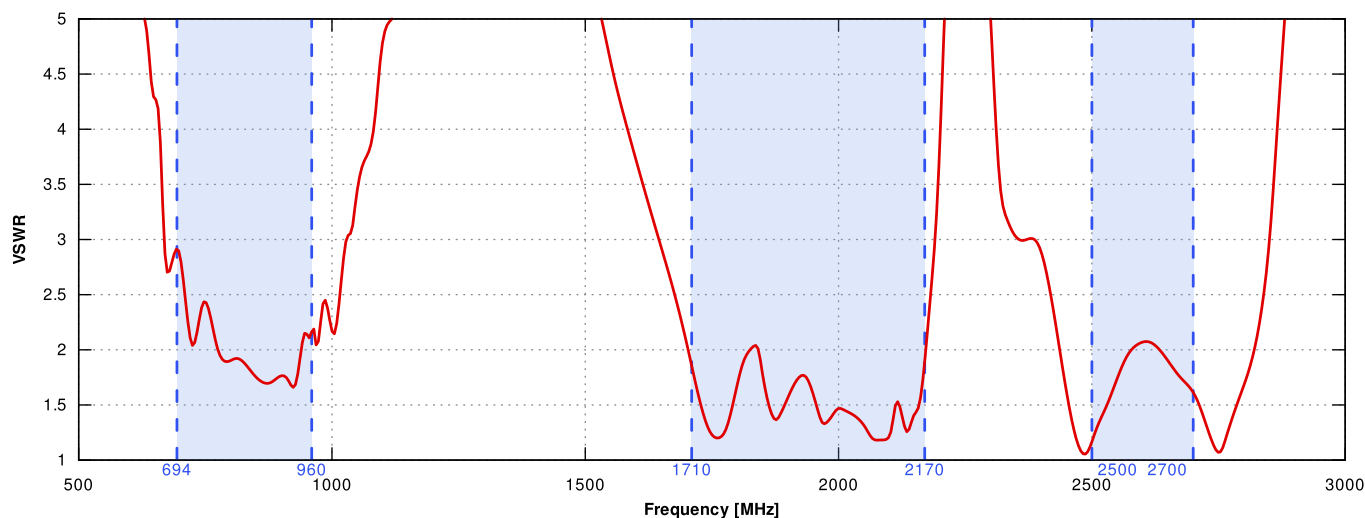
**LTE / 4G UMTS**

	1	2	3	4	9	10	25	
1710	33	34	35	36	37	39	n80	2170
MHz	n84	n86	n95	n98	n101			MHz

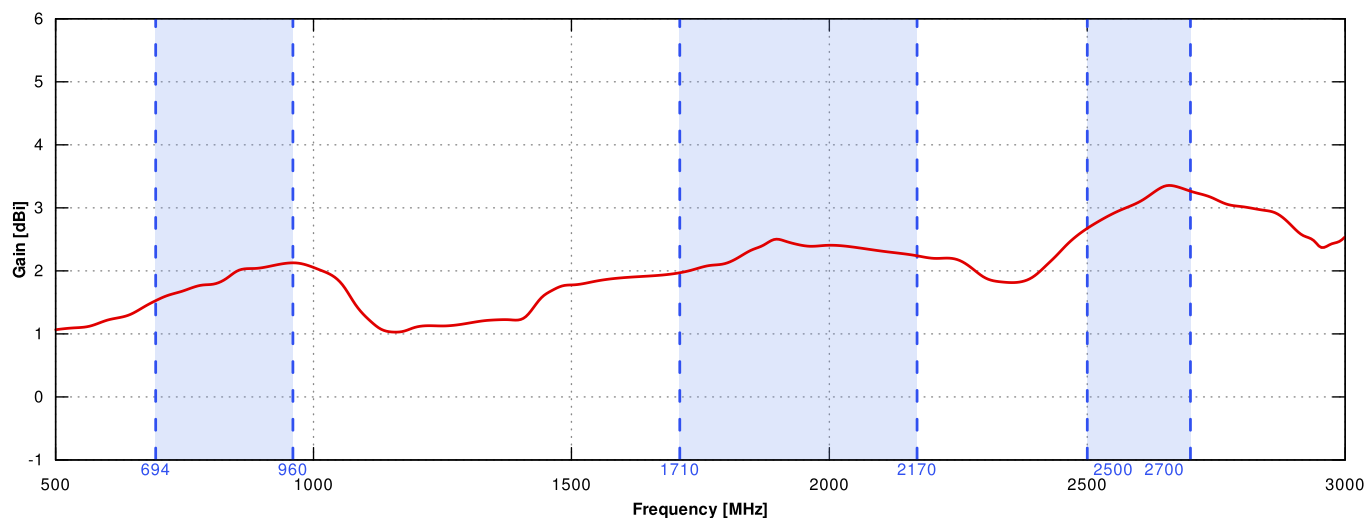
**LTE / 4G**

2400	7	38	69	2700
MHz				MHz

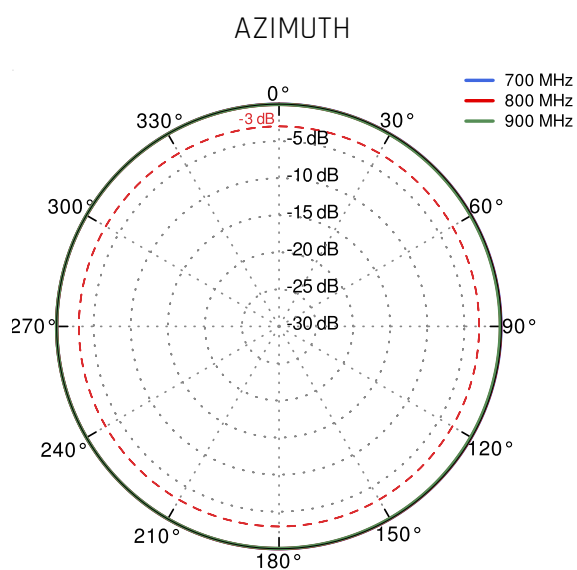
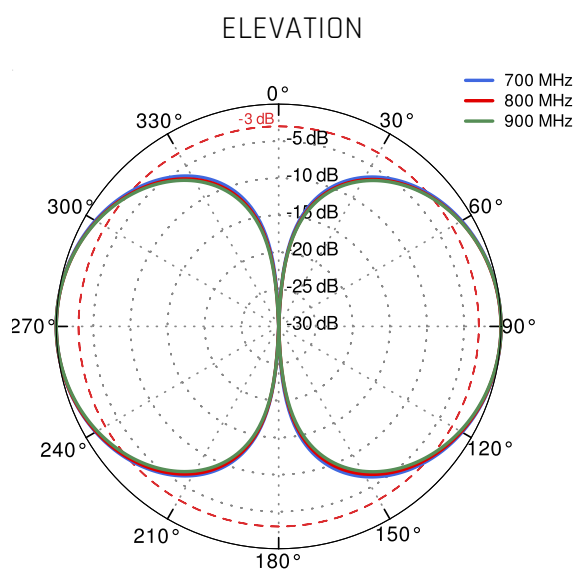
## PLOTS

**VSWR**


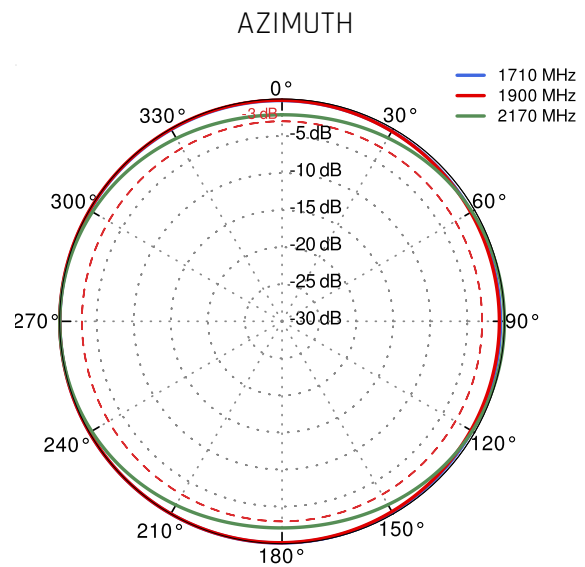
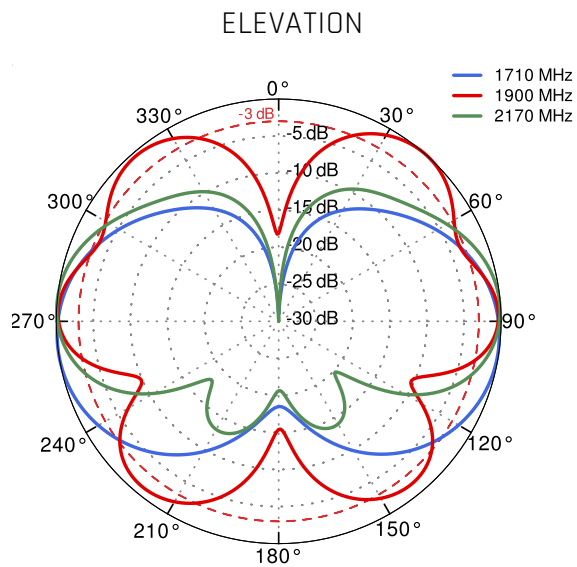
## Gain



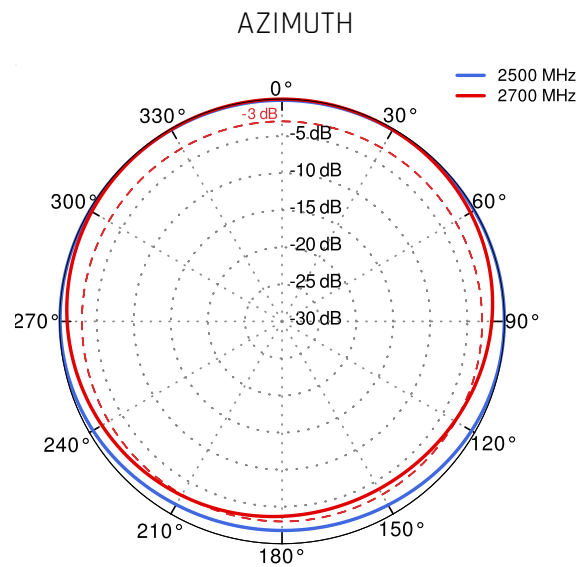
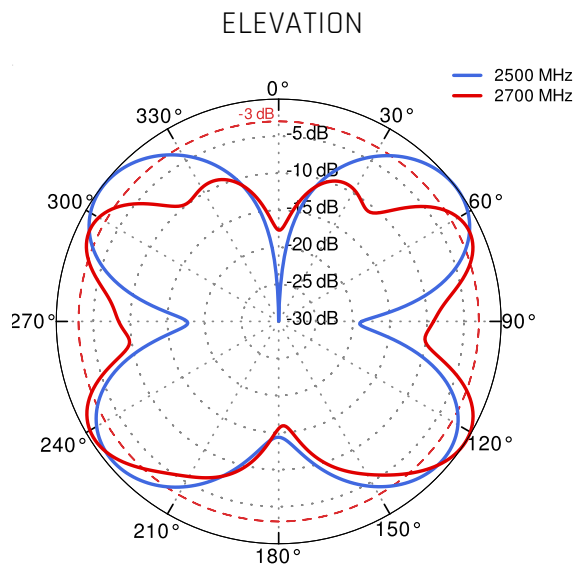
## From 700MHz to 900MHz



From 1.71GHz to 2.17GHz



From 2.5GHz to 2.7GHz



## DIMENSIONS

