

QuSpot for Teltonika RUTX10

Integrated outdoor multi band Wi-Fi omni antennas + Bluetooth antenna + place to install Teltonika RUTX10 (All-in-one)

QuSpot omni LTE antenna for Teltonika **RUTX10** router is a perfect outdoor device for mobile and fixed installations like industrial, CCTV, hotspots, yachts, boats, campers, RV etc. It has embedded also Wi-Fi dual band 2.4 & 5GHz omni antenna and Bluetooth omni antenna. If you use **RUTX10** with QuSpot antenna, you get an integrated complete solution with embedded router and multi band antennas in one enclosure.

This product is also compatible with **RUTM10**. If used with RUTM10, the Bluetooth antenna is unused.



**2.4GHz
5GHz**



BLUETOOTH



7 dBi



**OMNI
DIRECTIONAL**



2x2 MIMO



IP 68



-40° TO +80°



OUTDOOR ANTENNA WORKS IN **ANY
WEATHER CONDITIONS**, IP68



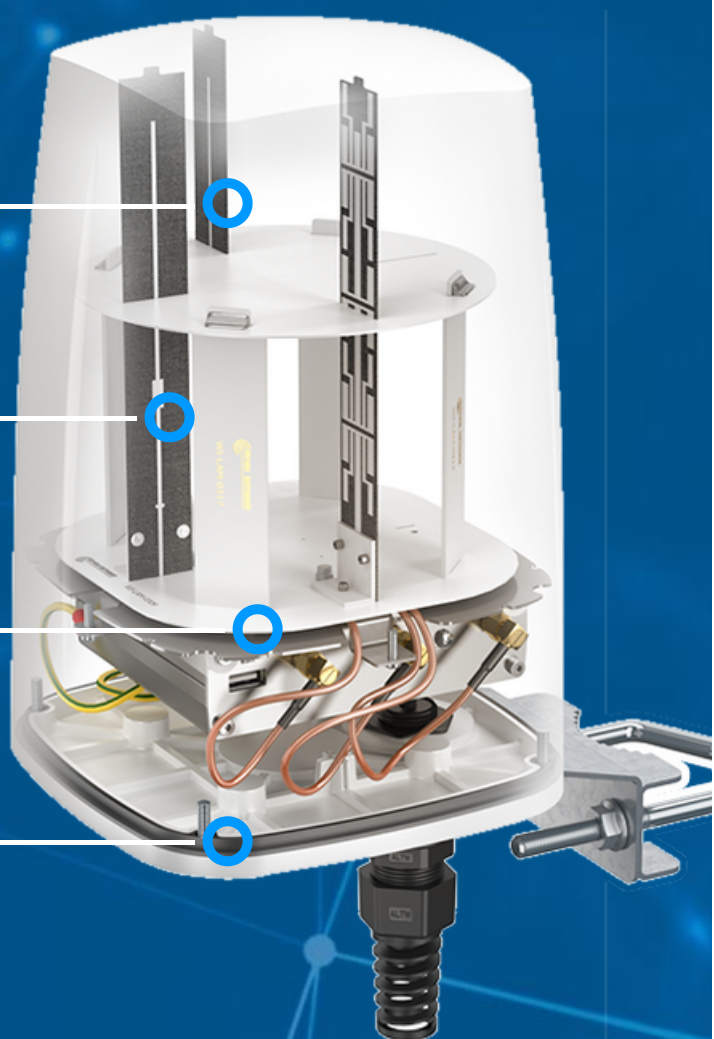
ANTENNA **PERFECTLY MATCHED** WITH
THE ROUTER



PASSIVE **POE SUPPORT**



MADE IN **EUROPE**



WI-FI ANTENNA SPECIFICATION

FREQUENCY	2.4 - 2.5 GHz 4.70 - 6.00 GHz
GAIN	2.40 - 2.50 GHz : 6 dBi 4.70 - 6.00 GHz : 7 dBi
VSWR	<2.00
BEAMWIDTH	360°/25° ±5°
POLARIZATION	Vertical
IMPEDANCE	50 Ω

BLUETOOTH ANTENNA SPECIFICATION

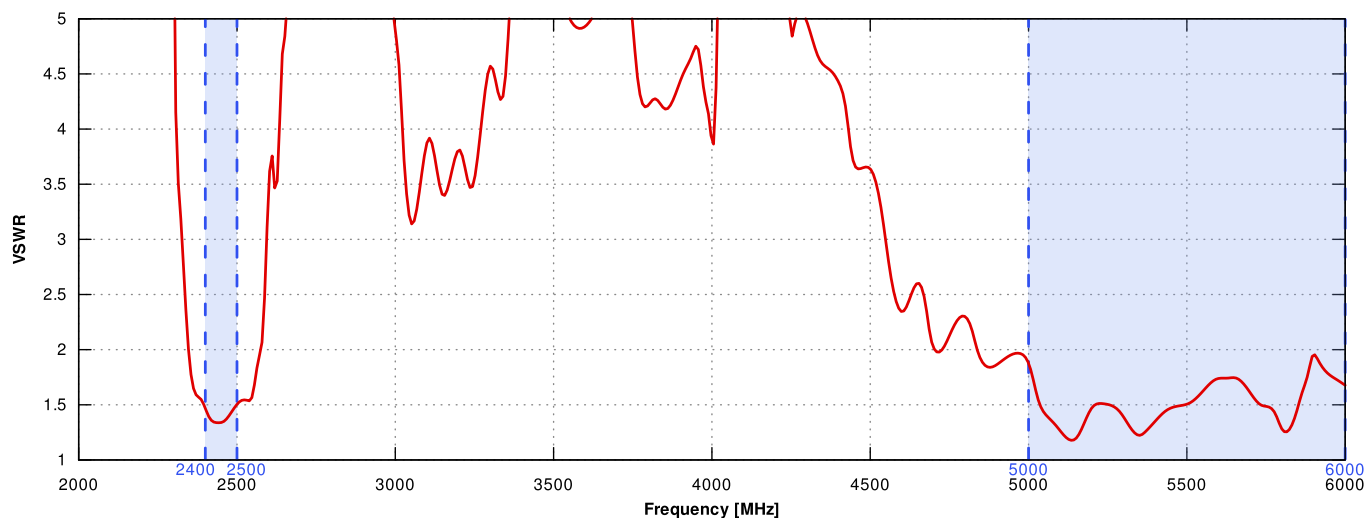
FREQUENCY	2.40 - 2.50 GHz
GAIN	6 Dbi
VSWR	<2.00
BEAMWIDTH	360°/25° ±5°
POLARIZATION	Vertical
IMPEDANCE	50 Ω

MECHANICAL SPECIFICATION

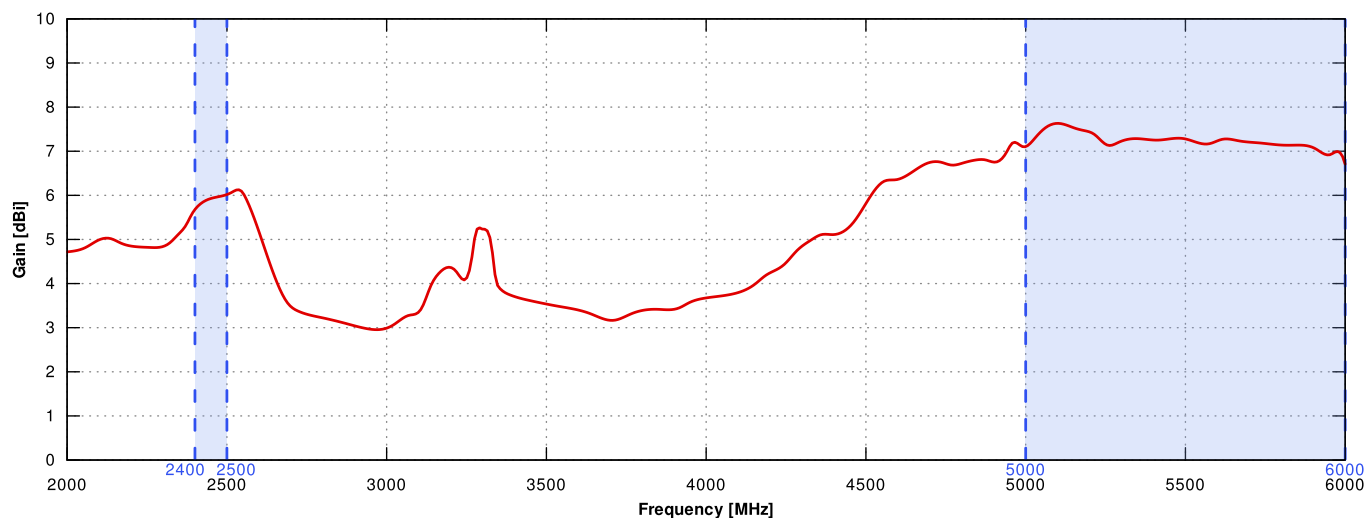
MATERIALS	ABS, aluminum, PTFE
CONNECTOR TYPE	RJ45
INGRESS PROTECTION	IP68
DIMENSIONS	160 x 160 x 240 mm 6.3 x 6.3 x 9.45 inch
WEIGHT	1.5 kg 3.31 lbs
OPERATING TEMPERATURE	From -40°C to 80°C From -40°F to 176°F
MAST DIAMETER	40-60 mm 1.57-2.36 inch

PLOTS

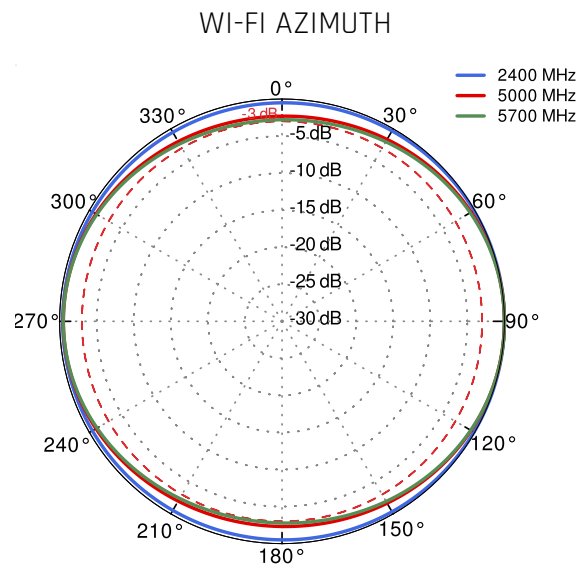
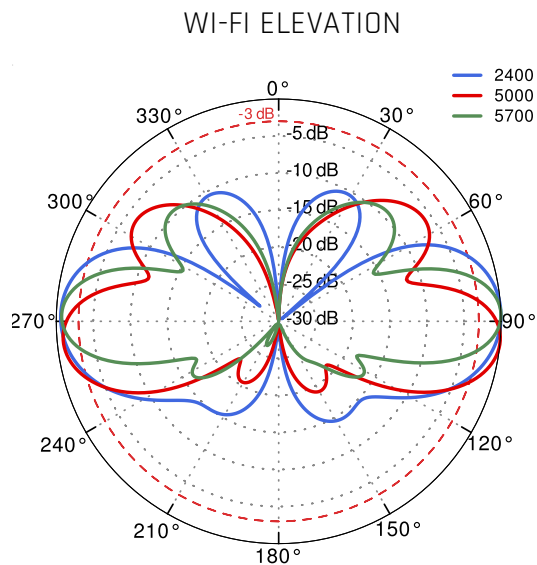
VSWR for Wi-Fi antenna



Gain for Wi-Fi antenna



Wi-Fi 2.4GHz and 5GHz



DIMENSIONS

