

QuPoE Switch SCA6E v2

PoE switch powered by PoE PSU or typical PSU through high power connector

-End of Life- PoE switch dedicated to power:

- 1x Teltonika
- RUT240 / RUT360 / RUT950 / RUT955 / RUTX09 / RUTX10 / RUTX11 / RUTX12 / RUTX14
- and 4x CCTV cameras with active PoE 802.3af/at.

This switch can be powered by two inputs: passive PoE on LAN_5 or by connecting wires directly to terminal block DC_IN. If both are used simultaneously, the source with higher voltage is the one which supply power to device. This can be used to automatically switch to backup power supply when other (with higher voltage) fails. Terminal block is capable to deliver 130W to powered devices, which is not possible through PoE due limited maximum current of Ethernet cables.

WE REGRET TO INFORM YOU THAT THE PRODUCT HAS REACHED ITS END OF LIFE (EOL). A NEWER AND BETTER VERSION IS NOW OUT. CHECK IT OUT HERE: [QUPOE SCA5GE](#)

END OF LIFE

 **1 x POE IN**
Passive 44-60V

 **1 x POE OUT**
Passive 24V

 **3 x POE OUT**
802.3af/at



DIRECT DC INPUT 44V ~ 60V, MAX
130W



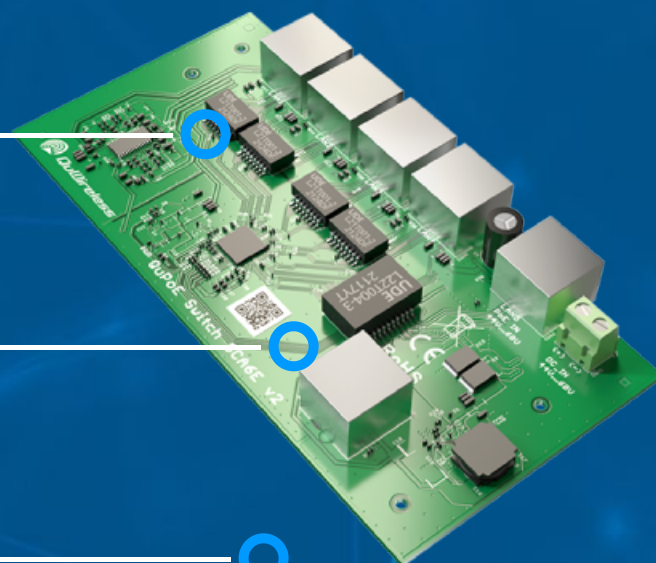
PASSIVE POE INPUT 44V ~ 60V



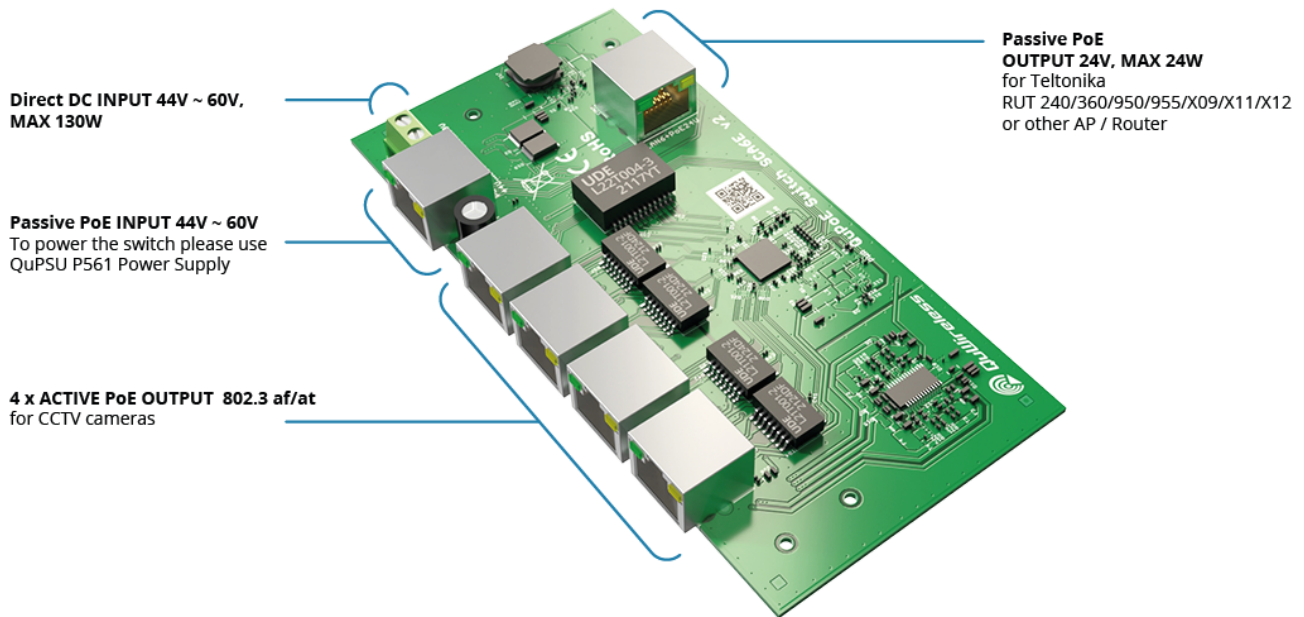
4 ACTIVE POE OUTPUT 802.3 AF / AT



PASSIVE POE OUTPUT 24V, MAX 24W



HOW IT WORKS



SPECIFICATION

LAN PORTS	6x RJ45 10/100Mbps
POWER INPUT	1x 2-way terminal block 44-60V / max. 130W (DC_IN)
POE INPUT	1x Passive PoE input 44-60V (LAN_5)
POE OUTPUT	4x Active PoE 802.3af/at (LAN_1-4) 1x Passive PoE output 24V/24W (LAN_6)
POE OUTPUT PROTECTION	LAN_1-4: 0.75A, LAN_5: 1.25A (separate resettable fuses)
PASSIVE POE MODE	mode B (4,5+) (7,8-)

LEDS	1x Power on (white, on board), 6x Link (orange, on port), 6x Transmit (green, on port)
OPERATING TEMPERATURE	-10°C ... +40°C
INSTALLATION	4x holes Ø2.5mm
DIMENSIONS	73mm x 145mm x 17mm (WxLxH)
WEIGHT	75g

