

# QuPoE AT-12V-5V-FP - 802.3at Splitter & Lightning arrester

**QuPoE AT-12V-5V-FP - active splitter that provides full PoE and data output protection. It is compliant with the IEEE802.3at standard. The device is ideal for outdoor applications and powering gateway devices, routers, etc.**

QuPoE AT-12V-5V-FP splitter provides full PoE and data output protection. It is compliant with the **IEEE802.3at standard** and has a work temperature range of -40...+80C. The device has **lightning, surge, ESD, EFT and power fault protection** and is ideal for outdoor applications and powering gateway devices, routers, etc.

The GDT elements, SIDAC Thyristor, High power TVS Diode and TVS Diode Array provide protection against lightning and high surge. The device has overcurrent protection that complies with the GR-1089, ITU K20/21, EN60950-1 power fault requirements.

The device has 2 DC output 12VDC and 5VDC. Max power for 5V is 10W and max power for 12V is 25W - 5V power. Outputs have overcurrent/short protection with auto restart.

**Based on high quality parts for working long life time.**



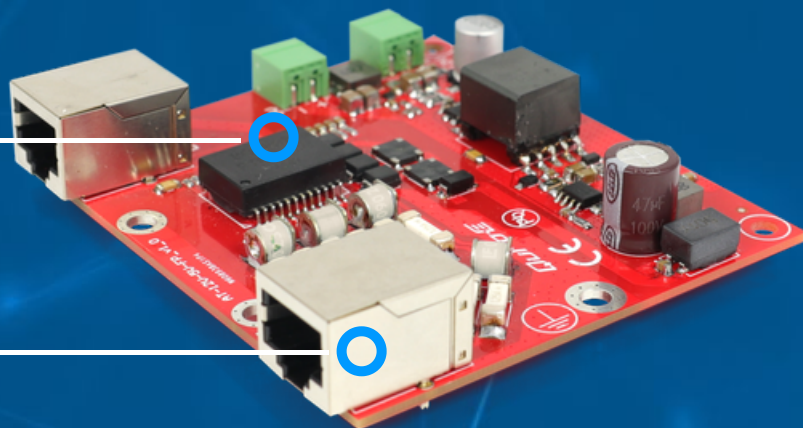
GIGABIT ETHERNET



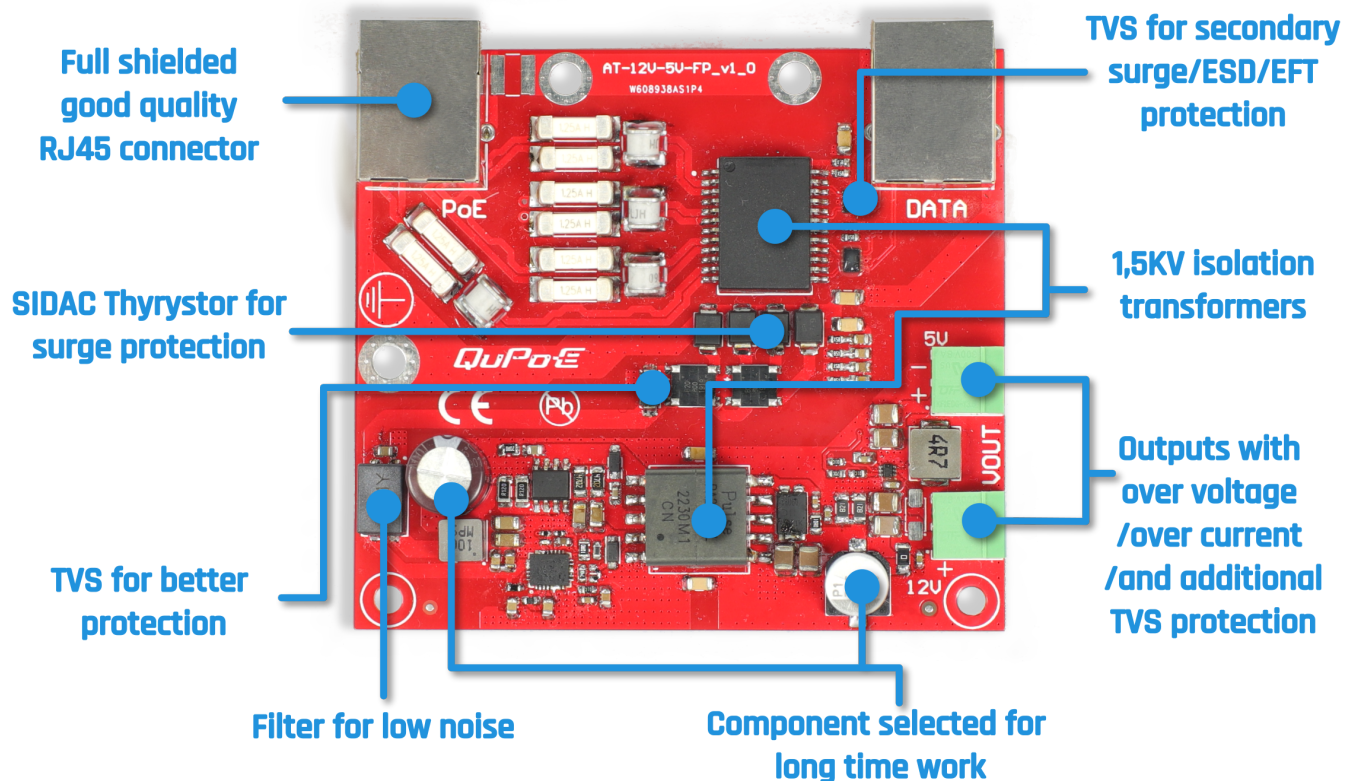
LIGHTNING/SURGE/ESD PROTECTION



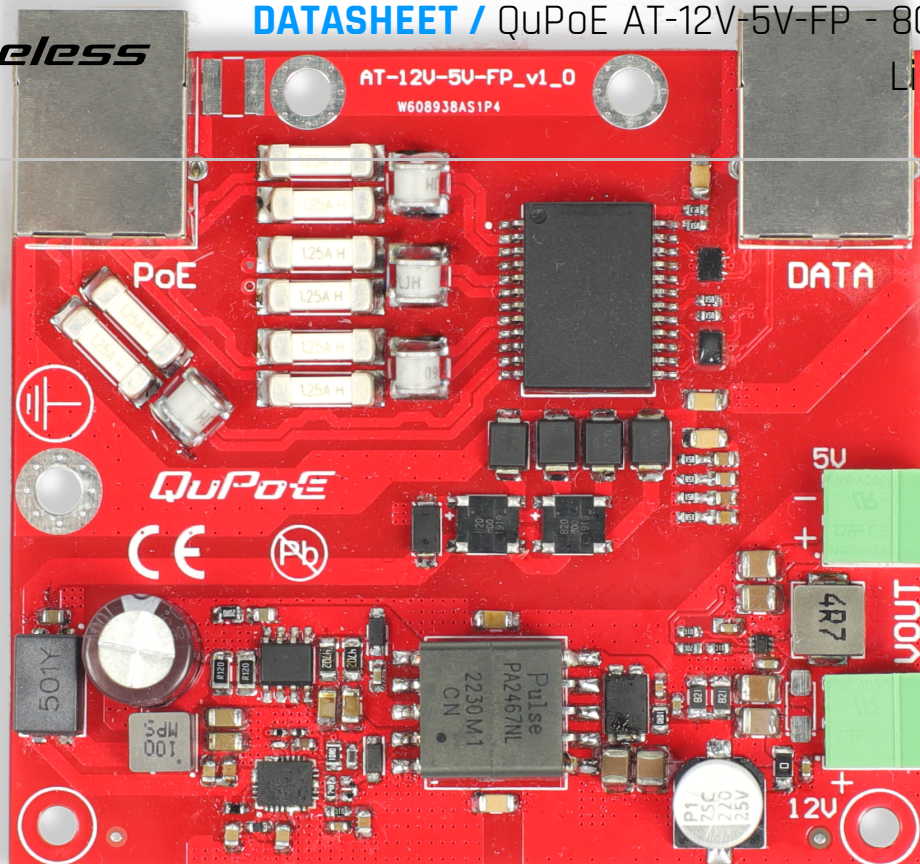
MADE IN EUROPE



## SAFETY FEATURES



## PORTS



**+5VDC  
OUT**

**+12VDC  
OUT**

## POE SPECIFICATION

### IEEE STANDARD

IEEE 802.3ab 1000Base-T Gigabit Ethernet  
IEEE 802.3at PoE (Power over Ethernet)

### POE IN

Powered from PoE in, IEEE802.3at  
38-58V, 30W max for PD\_802.3AT  
Supports both PoE A mode or B mode

### DC OUTPUT

PD\_802AT 12V (12-25W)  
5V (10W max)

### DATA OUT

RJ45 10/100/1000Base-T(X)

## MECHANICAL SPECIFICATION

### OPERATING TEMPERATURE

-40 ~ 80°C  
-40 ~ 176°F

95 x 70 x 17 mm

## PROTECTION

EN61000-4-2 (ESD)	Level 4 (8kV contact, 15kV Air), Criteria B
EN61000-4-3 (RS)	Level 3 (10V/m), Criteria A
EN61000-4-4 (EFT)	Level 4 (4kV), Criteria A
EN 61000-4-6 (CS)	Level 3, Criteria A or extended level
EN 61000-4-5 (SURGE)	Level 5 (min 2kV), Criteria B (Telecommunication cables) 2 kA 8/20 $\mu$ s 1 kA 10/350 $\mu$ s
GR-1089	YES
ITU-T K.20	YES
ITU-T K.21	YES
IEC60950-1	YES



## ISOLATION REQUIREMENTS

The GDTs (Gas Discharge Tubes) are connected between the data pair (and not GD) to be compliant with the IEEE802.3 standard. A properly rated transformer provides the required isolation for IEEE 802.3 compliance.

## POWER FAULT REQUIREMENTS

Series telecom fuses provide overcurrent protection that complies with the GR-1089, ITU K20/21, EN60950-1 power fault requirements.

## HOW TO CONNECT



**Sales email:** [sales@quwireless.com](mailto:sales@quwireless.com)

**Support email:** [support@guwireless.com](mailto:support@guwireless.com)

**Address:** Wireless Instruments Sp. z o.o., ul. Kościuszki 27, 52-116 Iwiny, Poland

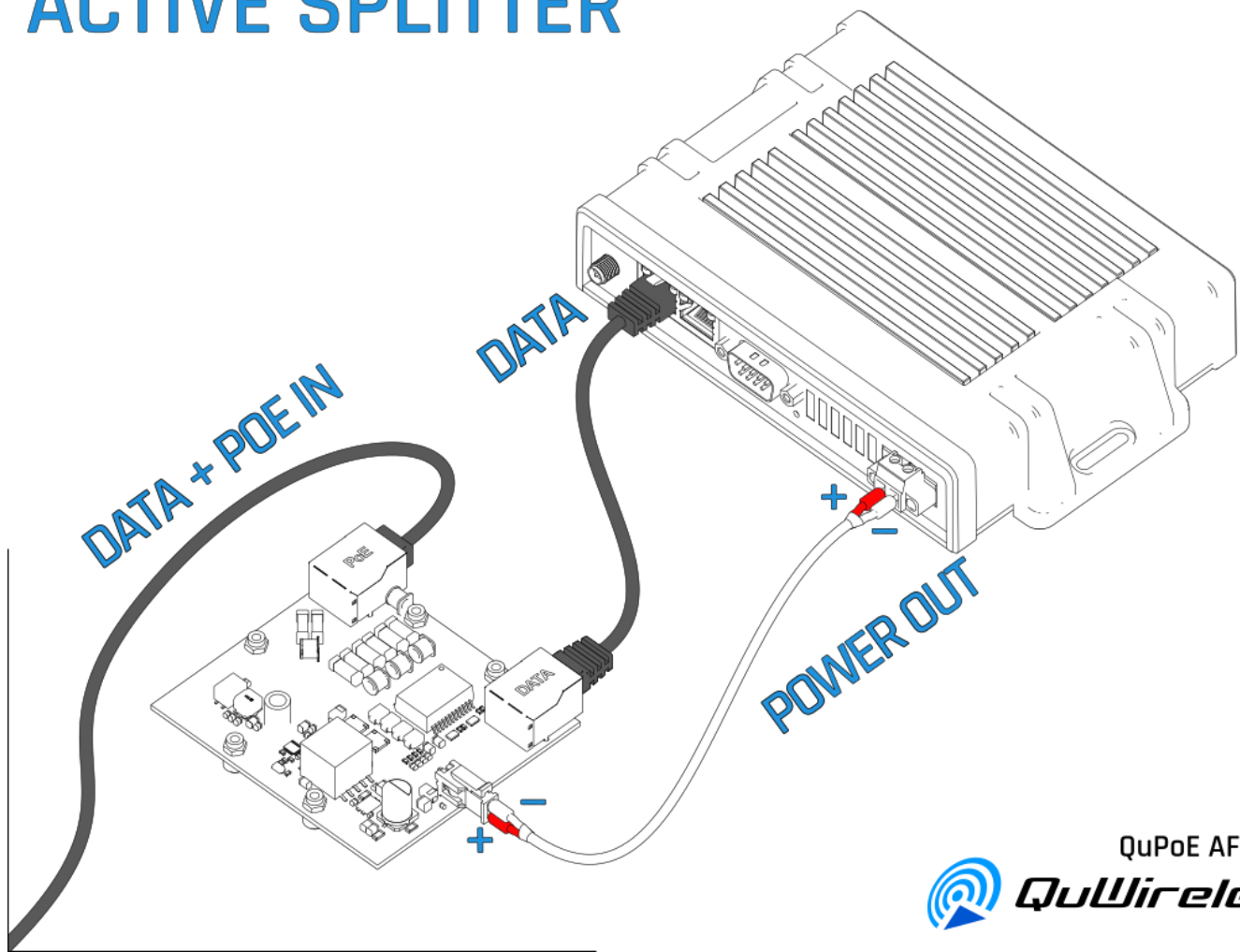
WWW.QUWIRELESS.COM

**Tel:** +48 513 900 416

**Website:** [www.guwireless.com](http://www.guwireless.com)



# ACTIVE SPLITTER



QuPoE AF-12V-FP

