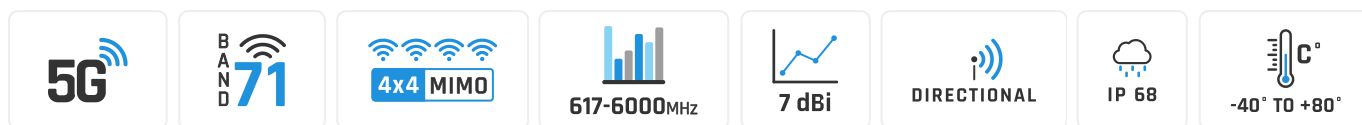


QuPanel 5G/LTE Global MIMO 4x4 Nf

Directional ultra wideband 5G/LTE MIMO 4x4 antenna with integrated Nf connectors

QuPanel **5G**/LTE Nf directional MIMO 4x4 is ultra wideband 5G outdoor antenna. It's primary designed for LTE/5G/3G/2G devices which require high efficiency connections. The antenna covers many LTE bands including the new Extended LTE **Band 71** and frequencies: **600 - 6000MHz**. The mounting bracket allows the antenna to be installed on the pole or on the wall, as the client antenna to receive Internet by LTE/5G/3G/2G. It's ideal solution to use with all industrial and domestic MIMO 4x4 5G modems and routers. Integrated Nf connectors.



WIDE BAND 600-6000MHZ, 5G TECHNOLOGY



FIBREGLASS, WALL OR POLE MOUNTING BRACKET



FOUR NF CONNECTORS



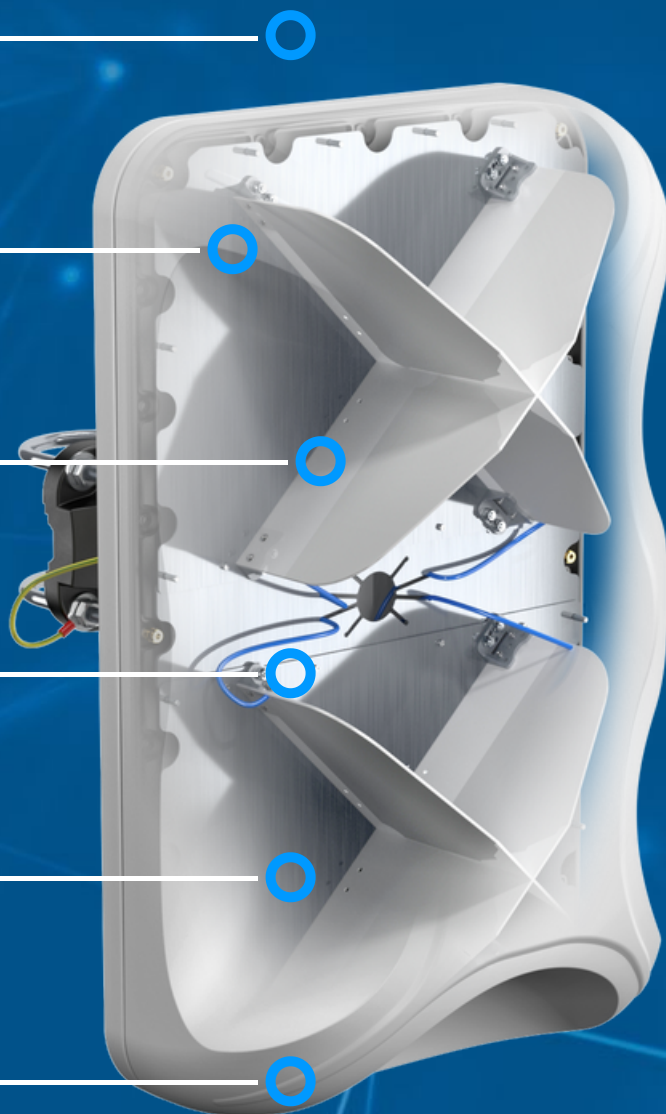
80° BEAMWIDTH



7DBI GAIN



MADE IN EUROPE



5G / LTE ANTENNA SPECIFICATION

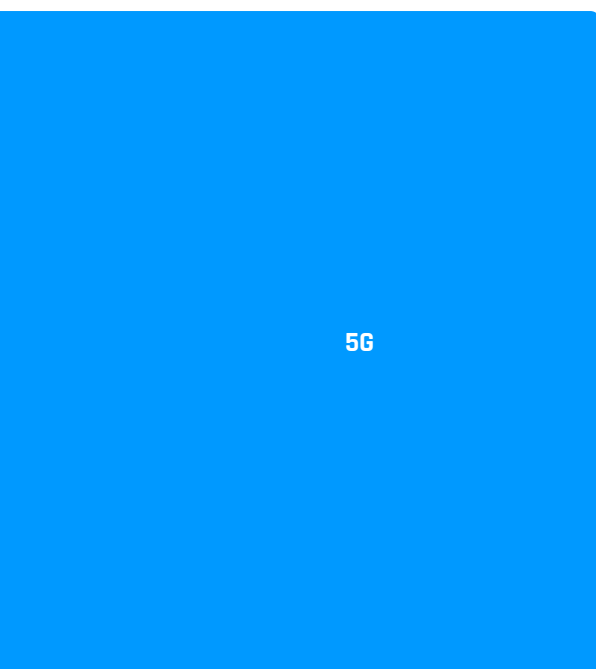
FREQUENCY	617 - 960 MHz 1.7 - 2.7 GHz 3.3 - 4.6 GHz 4.7 - 6.0 GHz
GAIN	617 - 960 MHz : 6 dBi 1.7 - 2.7 GHz : 7 dBi 3.3 - 4.6 GHz : 7 dBi 4.7 - 6.0 GHz : 5.5dBi
SUPPORTED LTE BANDS	1, 2, 3, 4, 5, 7, 8, 9, 10, 12, 13, 14, 17, 18, 19, 20, 22, 25, 26, 27, 28, 29, 30, 33, 34, 35, 36, 37, 38, 39, 40, 41, 42, 43, 44, 46, 47, 48, 49, 52, 53, 65, 66, 67, 68, 69, 71, 85, 103, 106
SUPPORTED 5G BANDS	n1, n2, n3, n5, n7, n8, n12, n13, n14, n18, n20, n25, n26, n28, n29, n30, n34, n38, n39, n40, n41, n46, n47, n48, n53, n65, n66, n67, n71, n77, n78, n79, n80, n81, n82, n83, n84, n85, n86, n89, n90, n95, n97, n98, n100, n101, n256
VSWR	<2.00, max <3.00
BEAMWIDTH	80°/80° ±15°
POLARIZATION	X (±45degrees)
IMPEDANCE	50 Ω

MECHANICAL SPECIFICATION

MATERIALS	ABS, aluminum, PTFE, fiberglass
CONNECTOR TYPE	Nf
INGRESS PROTECTION	IP68
DIMENSIONS	486.0 x 292.2 x 105.6 mm 19.13 x 11.50 x 4.16 inch
WEIGHT	2.8 kg 6.17 lbs
OPERATING TEMPERATURE	From -40°C to 80°C From -40°F to 176°F
MAST DIAMETER	25-60mm 0.98-2.36 inch

FREQUENCY BANDS

LTE / 4G	1	2	3	4	5	7	8
	9	10	12	13	14	17	18
	19	20	22	25	26	27	28
	29	30	33	34	35	36	37
	38	39	40	41	42	43	44
	45	47	48	49	52	53	65
	66	67	68	69	71	85	103
	106						
617 MHz							6000 MHz


5G

	n1	n2	n3	n5	n7	n8	n12	
	n13	n14	n18	n20	n25	n26	n28	
	n29	n30	n34	n38	n39	n40	n41	
617 MHz	n46	n47	n48	n53	n65	n66	n67	6000 MHz
	n71	n77	n78	n79	n80	n81	n82	
	n83	n84	n85	n86	n89	n90	n95	
	n97	n98	n100	n101	n256			

COMPATIBLE ROUTERS

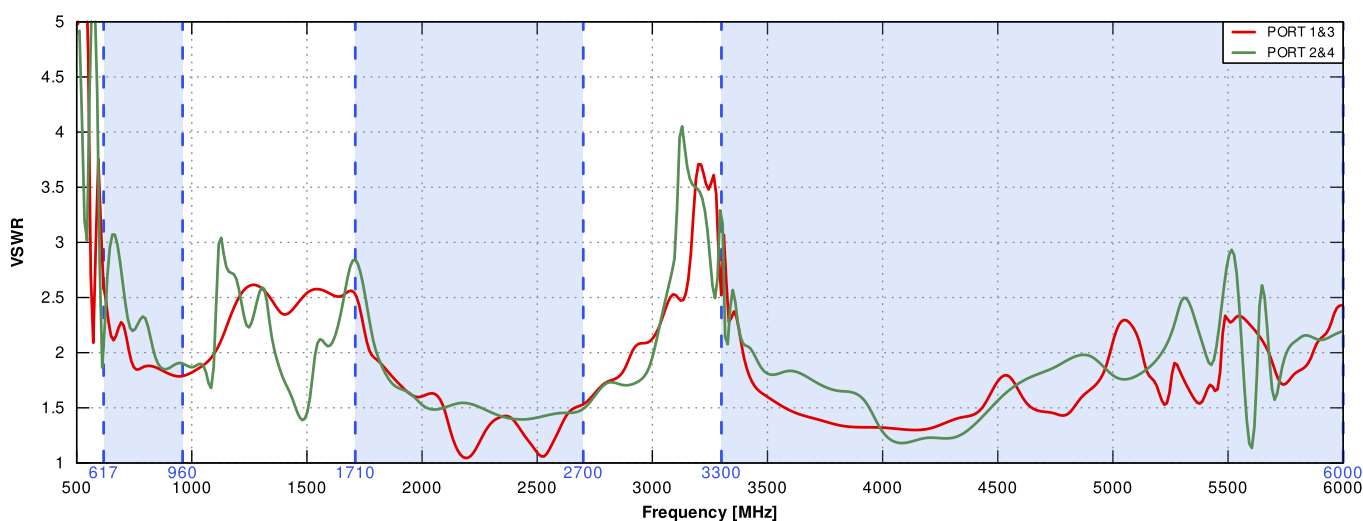
VARIANT: AP5G4-GN

TELTONIKA	RUTC50, RUTM51, RUTM54, RUTX12, RUTX14, RUTX50, TRB500
ROBUSTEL	EG5120, EG5200, R2000, R5010, R5020, R5020 Lite
COMSET	CM550W, CM580W, CM685VX, CM770W-6, CM950W
DIGI	EX50, IX40, TX54 LTE-Advanced, TX64
EE 5G (5GEE)	Smart 5G Hub
ERICSSON (CRADLEPOINT)	E300, E3000, IBR1700, R1900, R980, W1850, W2005, W4005
FIBOCOM	FM150-AE, FM150-NA, FM160-EAU, FM160-JK, FM160-NA, FM160-PN, FM190-GL, FM190W-GL, NL952-EAU, NL952-NA
FORTINET	FEX-311F, FEX-311F

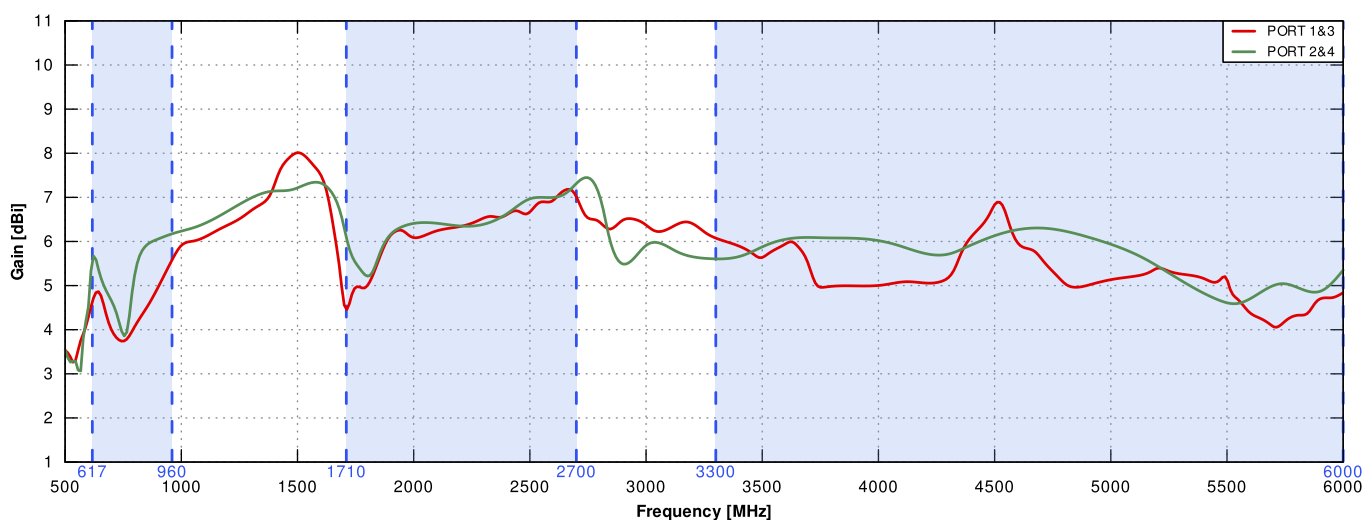
FOUR-FAITH	5G Industrial CPE F-NR200, 5G Industrial Router F-NR100, 5G SIM WiFi Router F-NR120, 5G Smart Light Pole Gateway F-G300, 5G WiFi Router with SIM Card Slot F-NR130, Smart Light Pole Gateway F-G310
MILESIGHT	UF31, UR75
PEPLINK	Balance 310 5G, Balance 310 fiber 5G, BR1 Mini 5G, BR1 Pro (CAT-20), BR1 Pro CAT-20, BR2 PRO, MAX BR1 Pro 5G, MAX HD2, MAX HD2 Mini, MAX Transit, MAX Transit Duo Pro, UBR Plus
PROROUTE	H685 WRT M2M 5G Router, H900 5G Router
QUECTEL	5G RM500Q-AE, 5G RM500Q-GL, 5G RM502Q-GL, 5G RM505Q-AE, 5G RM510Q-GL, 5G RM520N-EU, 5G RM520N-GL, 5G RM521F-GL, 5G RM530N-GL, LTE-A EM160R-GL
ROBUSTEL	EG5120, EG5200, R2000, R5010, R5020, R5020 Lite
SEMTECH (SIERRA WIRELESS)	AirLink MG90 5G, EM9190, EM9191, EM9291, XR60
SIEMENS	6GK5853-2EA00-2DA1, 6GK5856-2EA00-3AA1, 6GK5856-2EA00-3DA1
SIMCOM	SIM8202X-M2, SIM8260G-M2, SIM8262X-M2 Series, SIM8380G-M2
TELIT CINTERION	FN980/FN980m, FN990A40/A28, LM960A18 Series, MV31, MV32
TELTONIKA	RUTC50, RUTM51, RUTM54, RUTX12, RUTX14, RUTX50, TRB500
WAVETEL	W4600-NR 5G, W4A00 5G, WNR320 5G, WNR340 5G
WLINK	G230, G530, G530
ZTE	ZM9020
ZYXEL	Nebula FWA510, NR5103
OTHER	4 * SMA

PLOTS

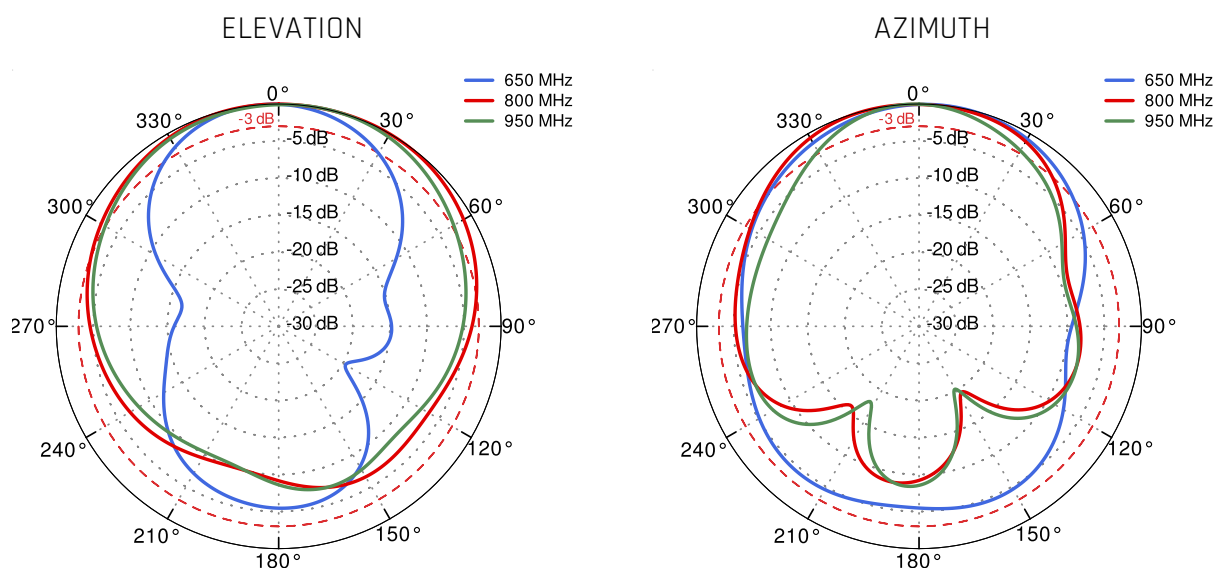
VSWR



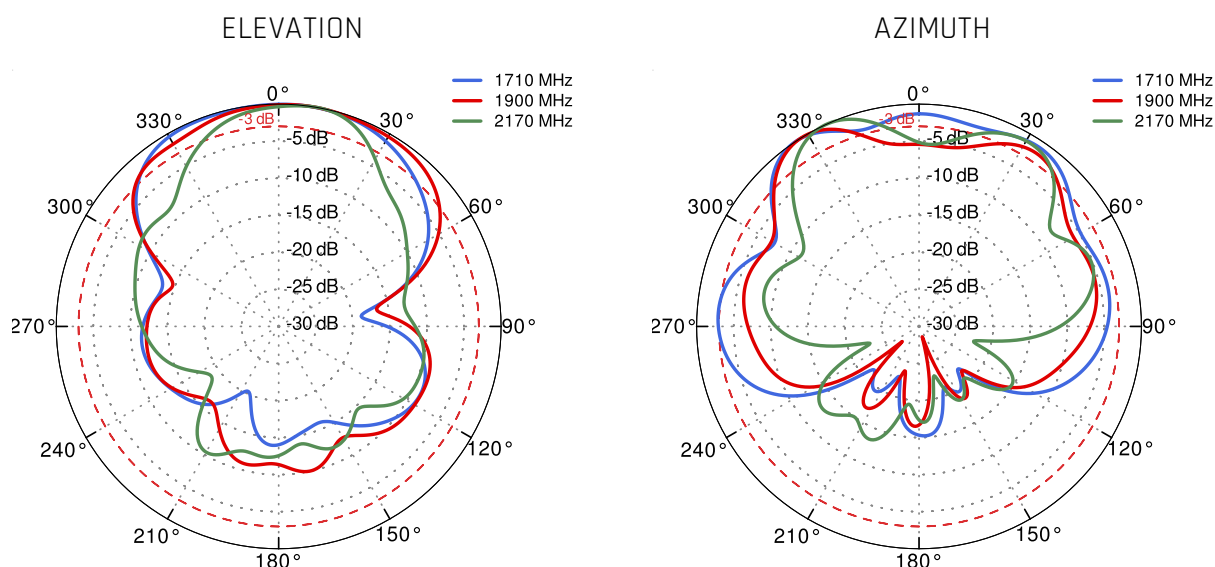
Gain



PORT 1 - 5G/LTE from 650MHz to 950MHz



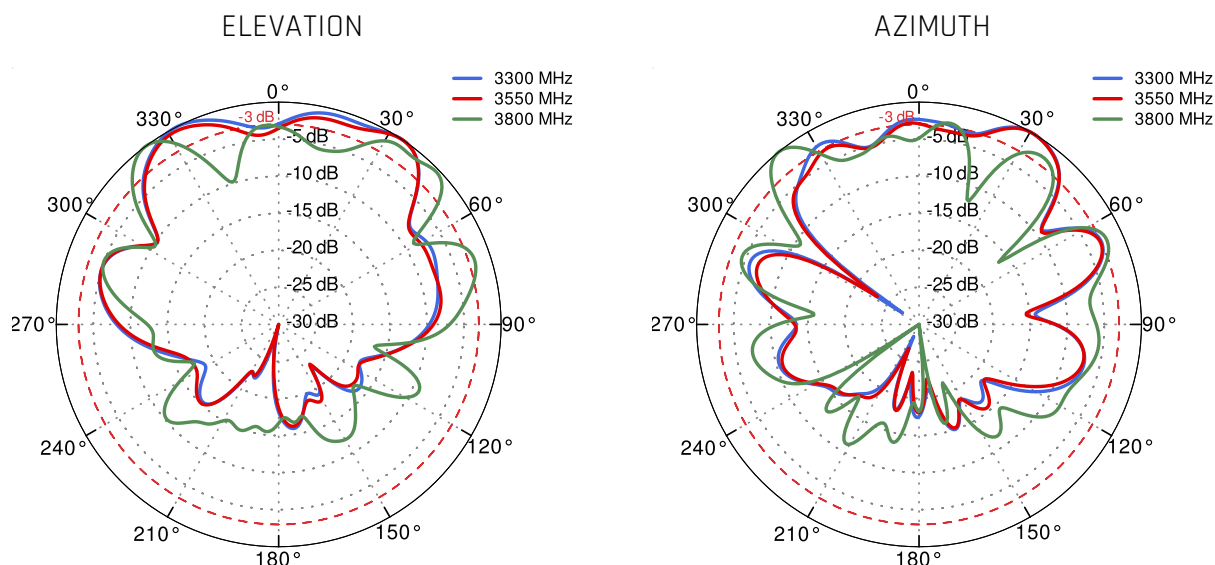
PORT 1 - 5G/LTE from 1.71GHz to 2.17GHz



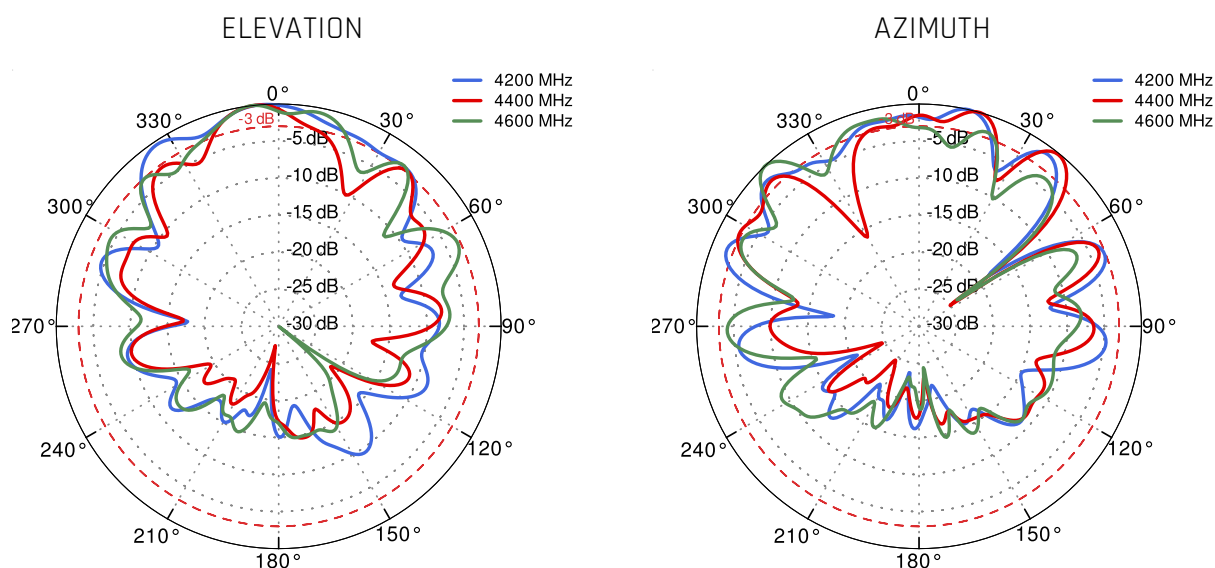
PORT 1 - 5G/LTE from 2.3GHz to 2.7GHz



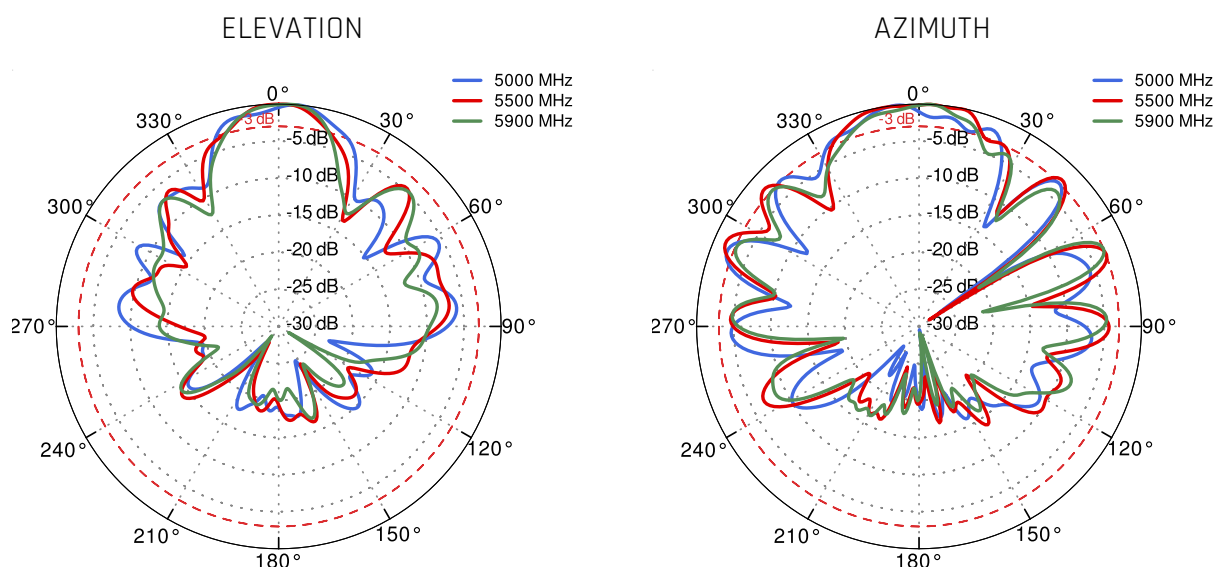
PORT 1 - 5G/LTE from 3.3GHz to 3.8GHz



PORT 1 - 5G/LTE from 4.2GHz to 4.6GHz



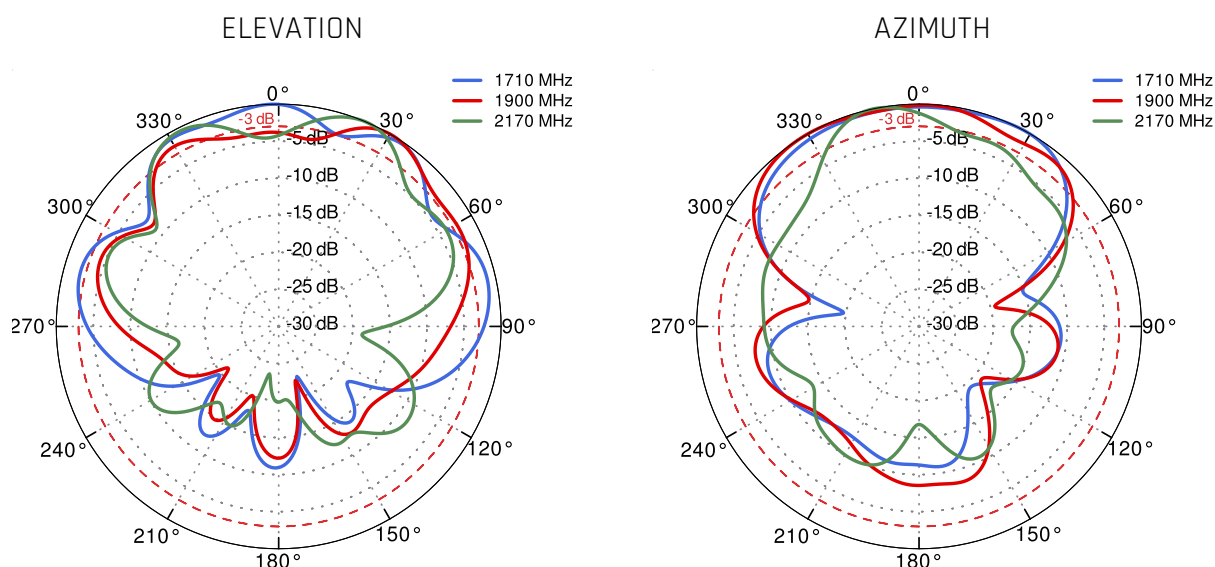
PORT 1 - 5G/LTE from 5.0GHz to 5.9GHz



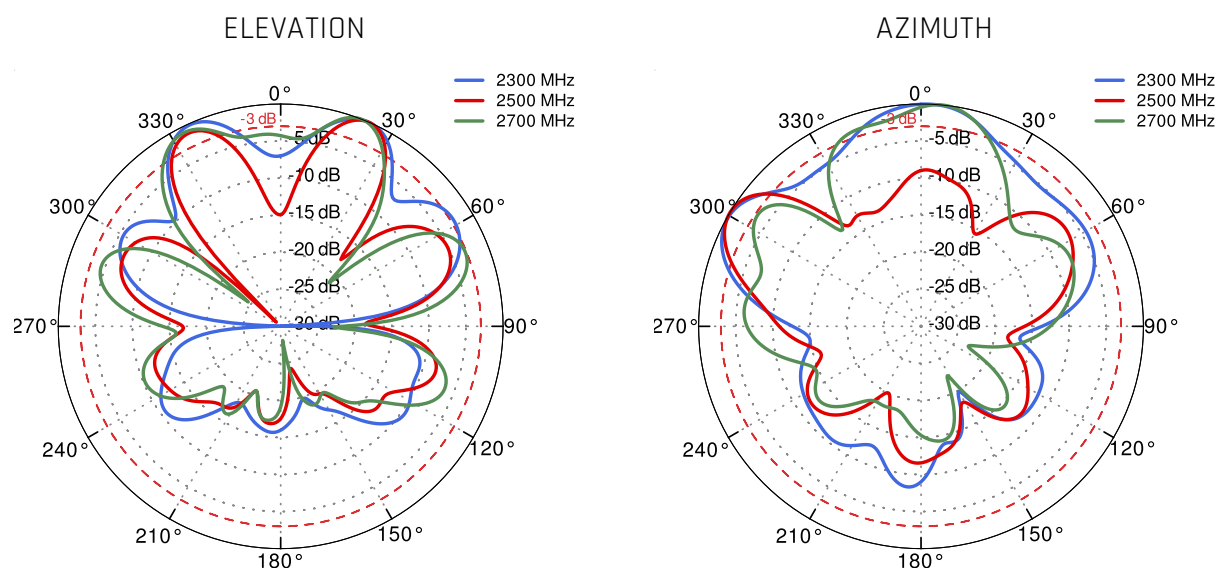
PORT 2 - 5G/LTE from 650MHz to 950MHz



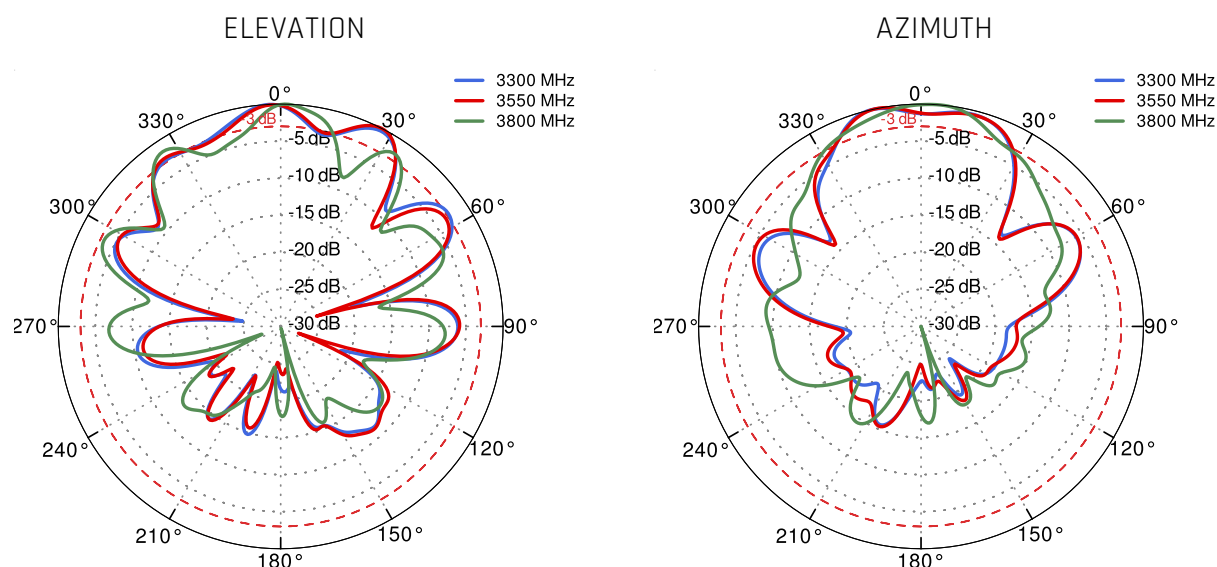
PORT 2 - 5G/LTE from 1.71GHz to 2.17GHz



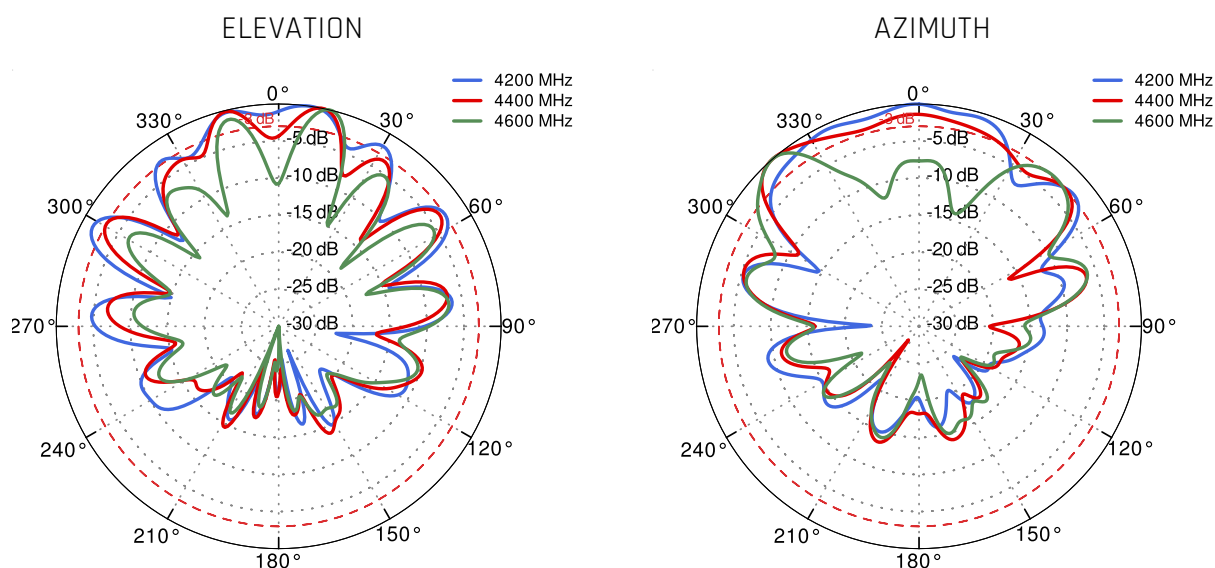
PORT 2 - 5G/LTE from 2.3GHz to 2.7GHz



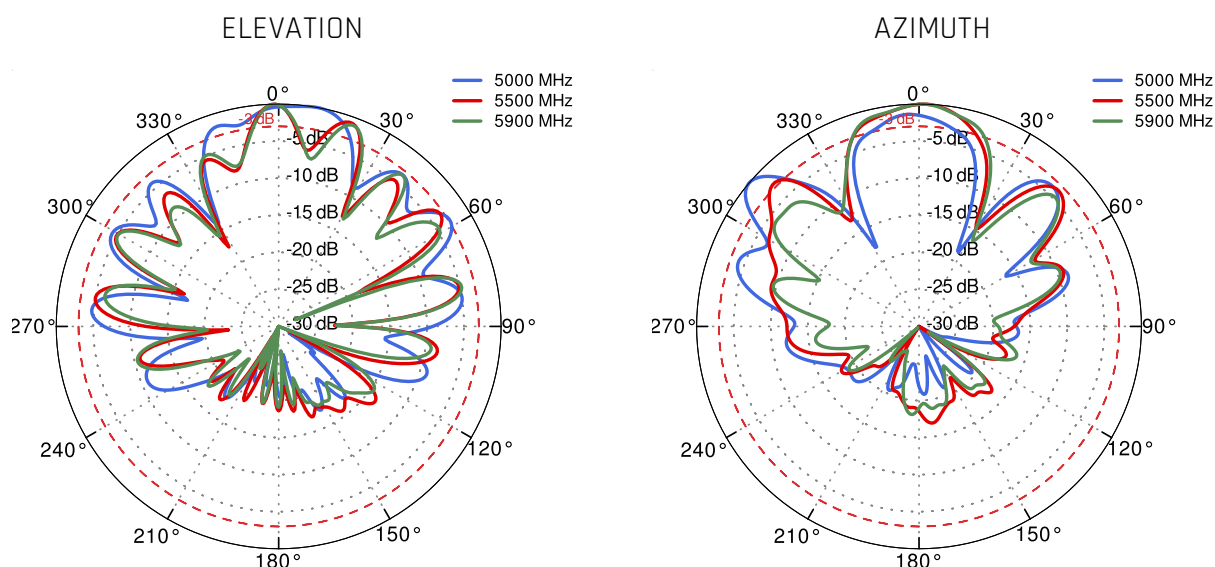
PORT 2 - 5G/LTE from 3.3GHz to 3.8GHz



PORT 2 - 5G/LTE from 4.2GHz to 4.6GHz



PORT 2 - 5G/LTE from 5.0GHz to 5.9GHz



DIMENSIONS

