

QuMax XR for Cisco 9120AXE

Integrated outdoor multi band eXtra Range Wi-Fi directional antenna + place to install Cisco 9120AXE

QuMax eXtra Range for Cisco 9120AXE offers the most powerful directional Wi-Fi antenna of all QuWireless antennas. It is dedicated to connections with long distance to base station. It is designed to have **Cisco 9120AXE** router installed inside IP67 enclosure. It is the first choice for fixed installations in industrial environment.

Wi Fi 6E

2.4GHz + 5GHz
6GHz + 7GHz

17 dBi

4x4 MIMO

DIRECTIONAL

IP 67

-40° TO +80°



OUTDOOR ANTENNA WORKS IN **ANY**
WEATHER CONDITIONS, IP67



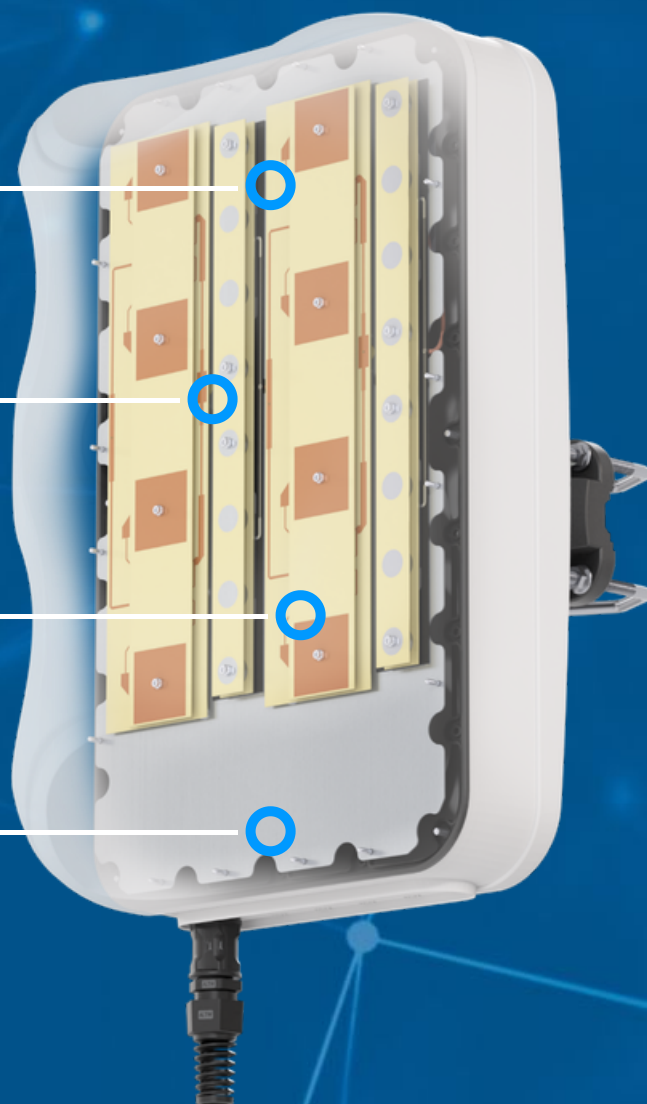
ANTENNA **PERFECTLY MATCHED** WITH
THE ACCESS POINT



WALL OR MAST MOUNTING SYSTEM
WITH **TWO PLANES**, **60 DEGREES**
REGULATION



MADE IN **EUROPE**



WI-FI SPECIFICATION

FREQUENCY	2.3 - 2.6GHz 5.1 - 7.125GHz
GAIN	2.3 - 2.6 GHz : 14 dBi 5.1 - 7.125 GHz : 17 dBi
VSWR	< 2
BEAMWIDTH	2.3 - 2.6 GHz : 90° /16° 5.1 - 7.125 GHz : 90° /8°
POLARIZATION	Horizontal Vertical
IMPEDANCE	50 Ω

MECHANICAL SPECIFICATION

MATERIAL	ABS
CONNECTOR	RJ45
OUTER DIMENSIONS	486.0 x 292.2 x 210.0 mm 19.13 x 11.50 x 8.27 inch
WEIGHT	2.8 kg
OPERATING TEMPERATURE	-40°C to +80°C -40°F to 176°F

MOUNTING KIT

DIMENSIONS

9.9 x 10.5 x 14.8 cm
3.9 x 4.13 x 5.83 inch

REGULATION RANGE

+/- 30°

MAST DIAMETER RANGE

25 - 60mm
0.98-2.36 inch

MATERIAL

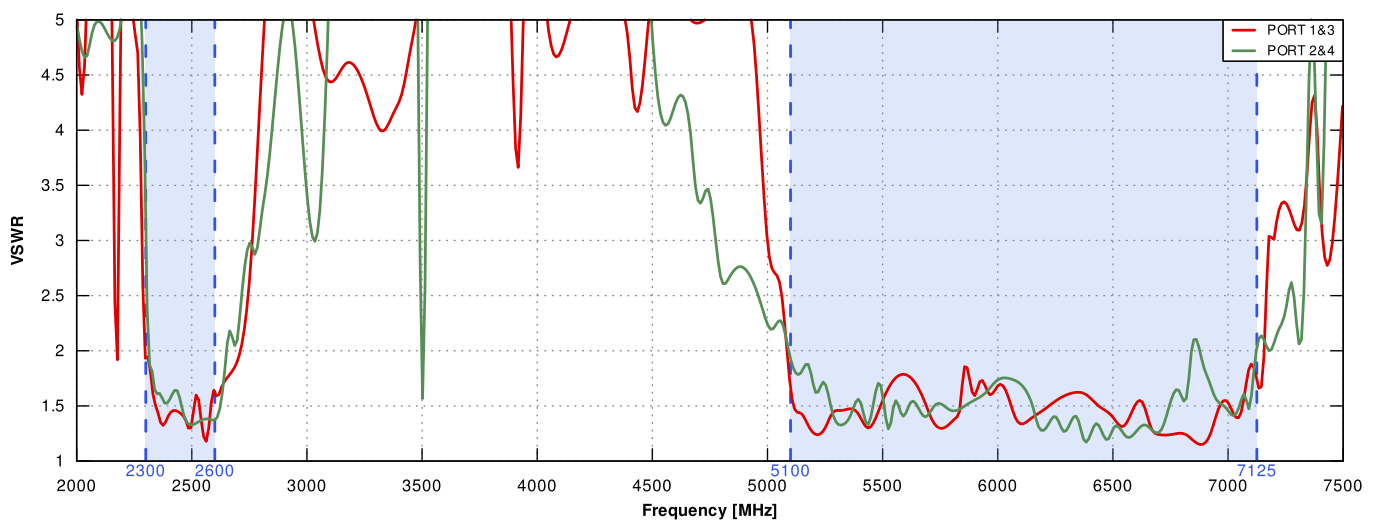
Polyamide with fiberglass + galvanized steel U-Bolts

MOUNTING PLACE

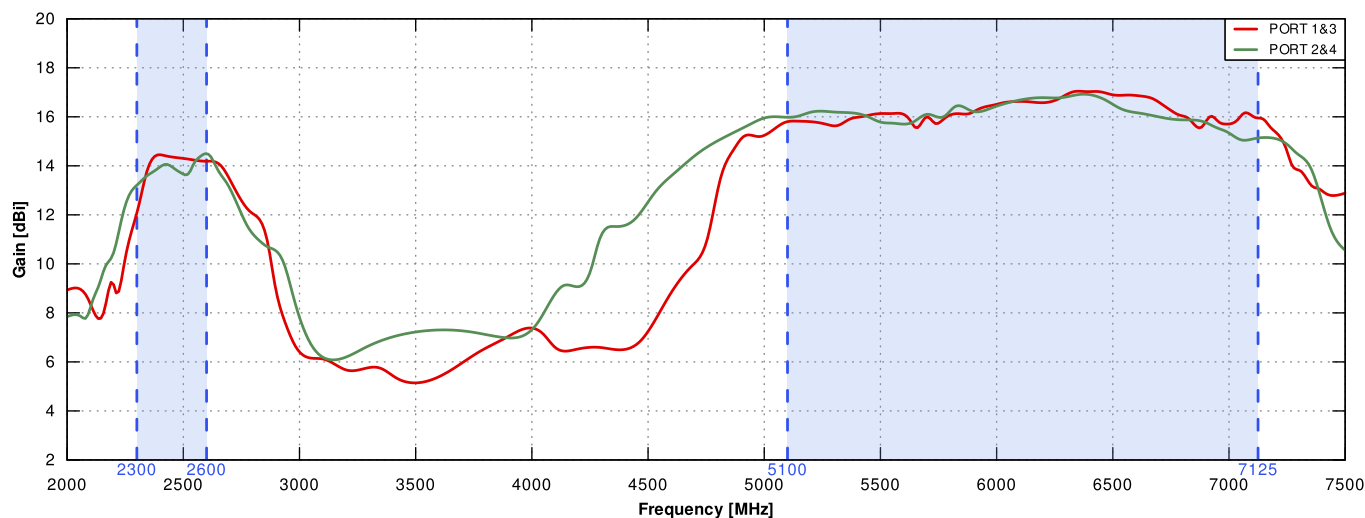
Wall or ceiling or mast

PLOTS

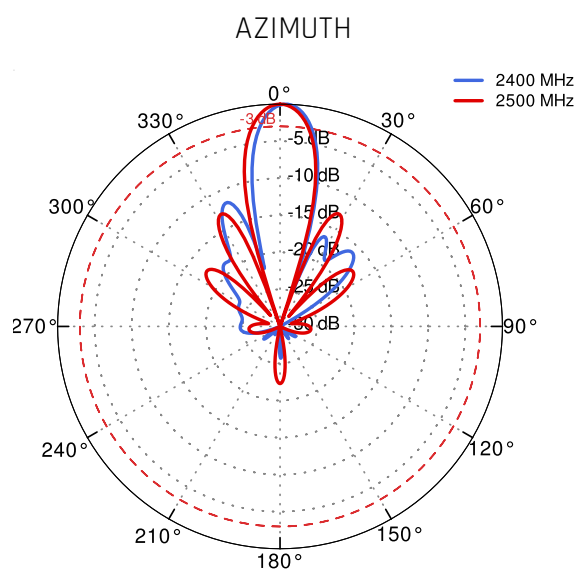
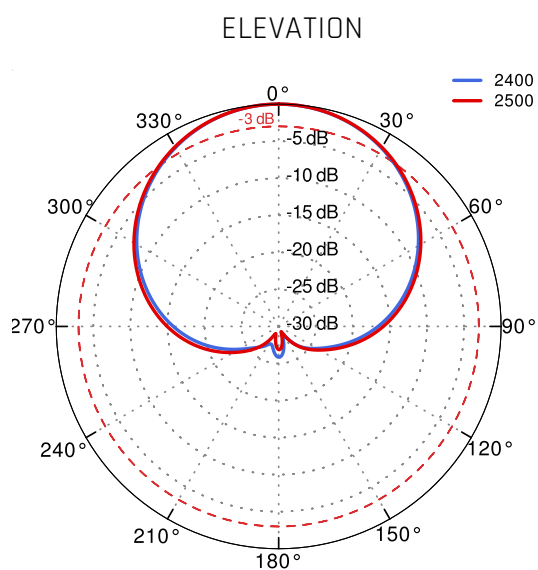
VSWR



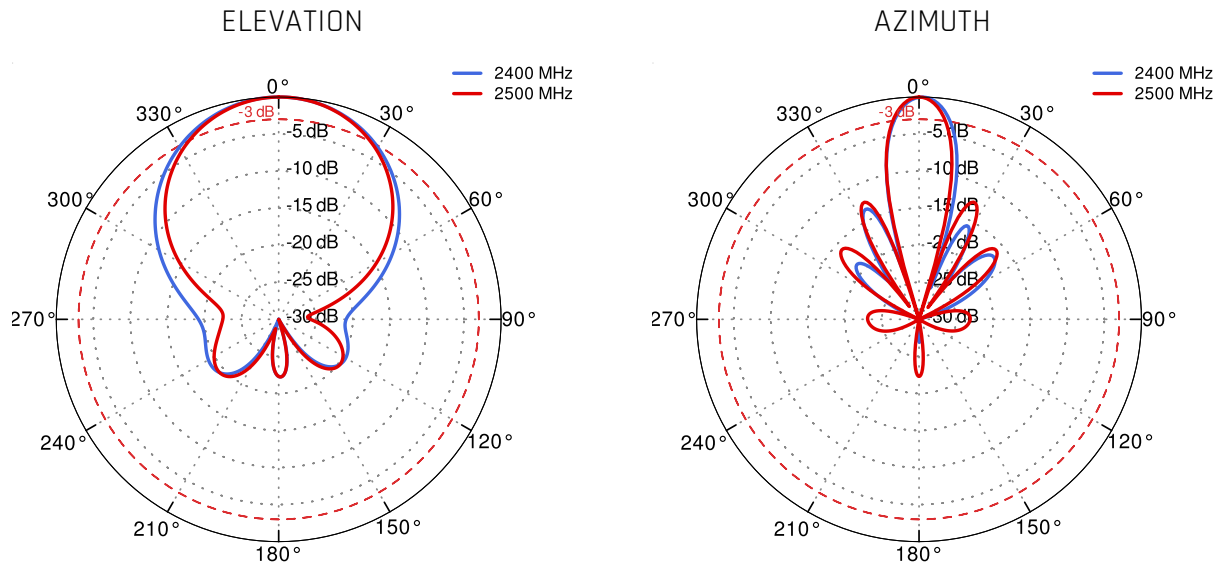
Gain



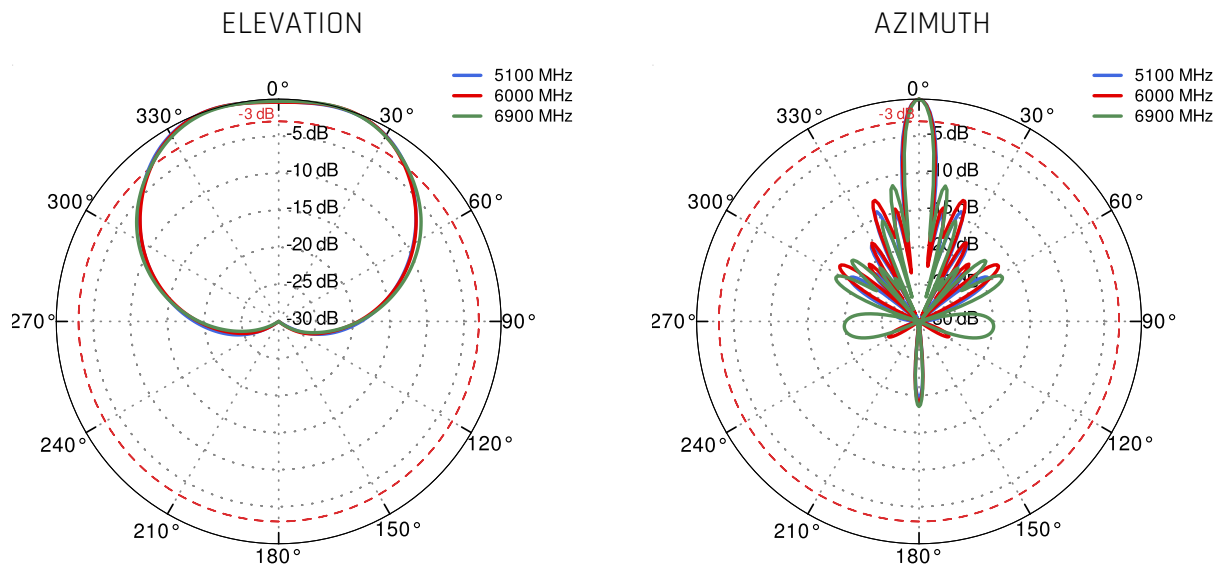
PORT 1&3 From 2.4GHz to 2.5GHz



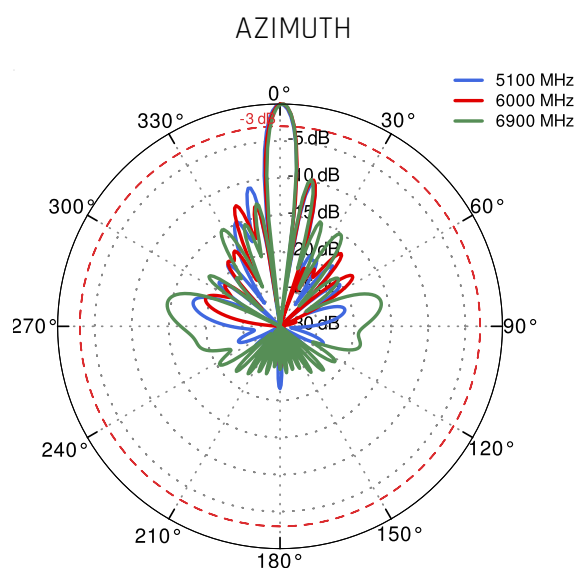
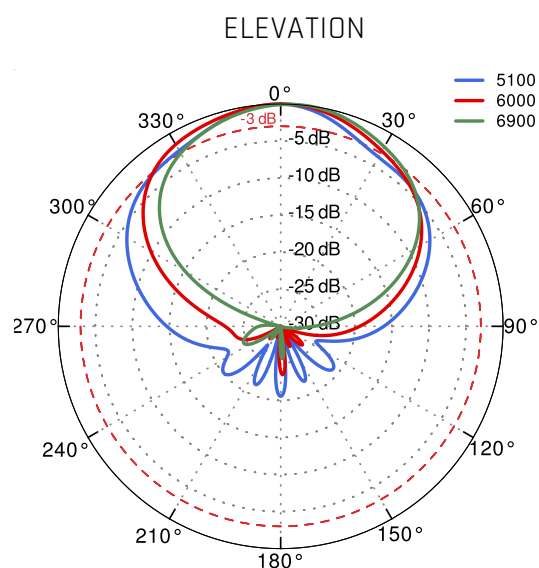
PORT 2&4 From 2.4GHz to 2.5GHz



PORT 1&3 From 5.1GHz to 5.9GHz



PORT 2&4 From 5.1GHZ to 5.9GHZ



DIMENSIONS

