

# QuPoE AT-12V-FP - 802.3at Splitter & Lightning arrester

**QuPoE AT-12V-FP - active splitter that provides full PoE and data output protection. It is compliant with the IEEE802.3at standard. The device is ideal for outdoor applications and powering gateway devices, routers, etc.**

QuPoE AT-12V-FP splitter provides full PoE and data output protection. It is compliant with the **IEEE802.3at standard** and has a work temperature range of -40...+80C. The device has **lightning, surge, ESD, EFT and power fault protection** and is ideal for outdoor applications and powering gateway devices, routers, etc.

The GDT elements, SIDAC Thyristor, High power TVS Diode and TVS Diode Array provide protection against lightning and high surge. The device has overcurrent protection that complies with the GR-1089, ITU K20/21, EN60950-1 power fault requirements.

The device has 1 DC output 12VDC 2,1A (25W) overcurrent/short protection with auto restart.

**Based on high quality parts for working long life time.**



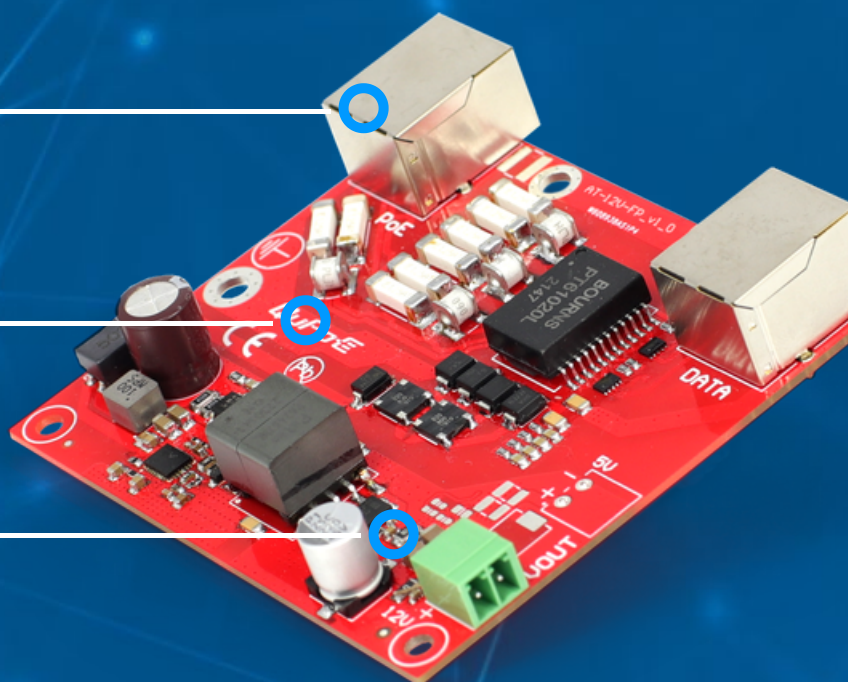
GIGABIT ETHERNET



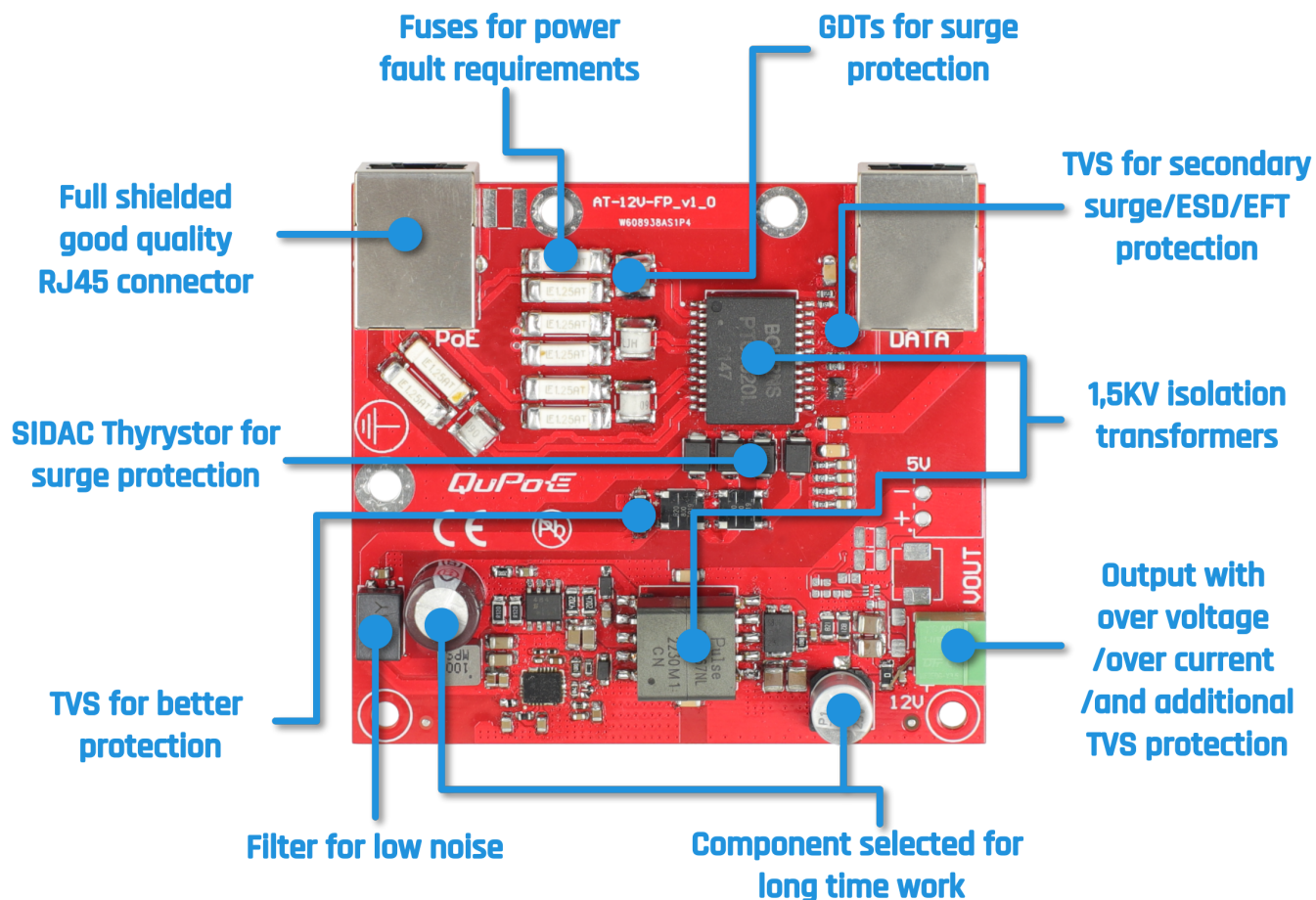
LIGHTNING/SURGE/ESD PROTECTION



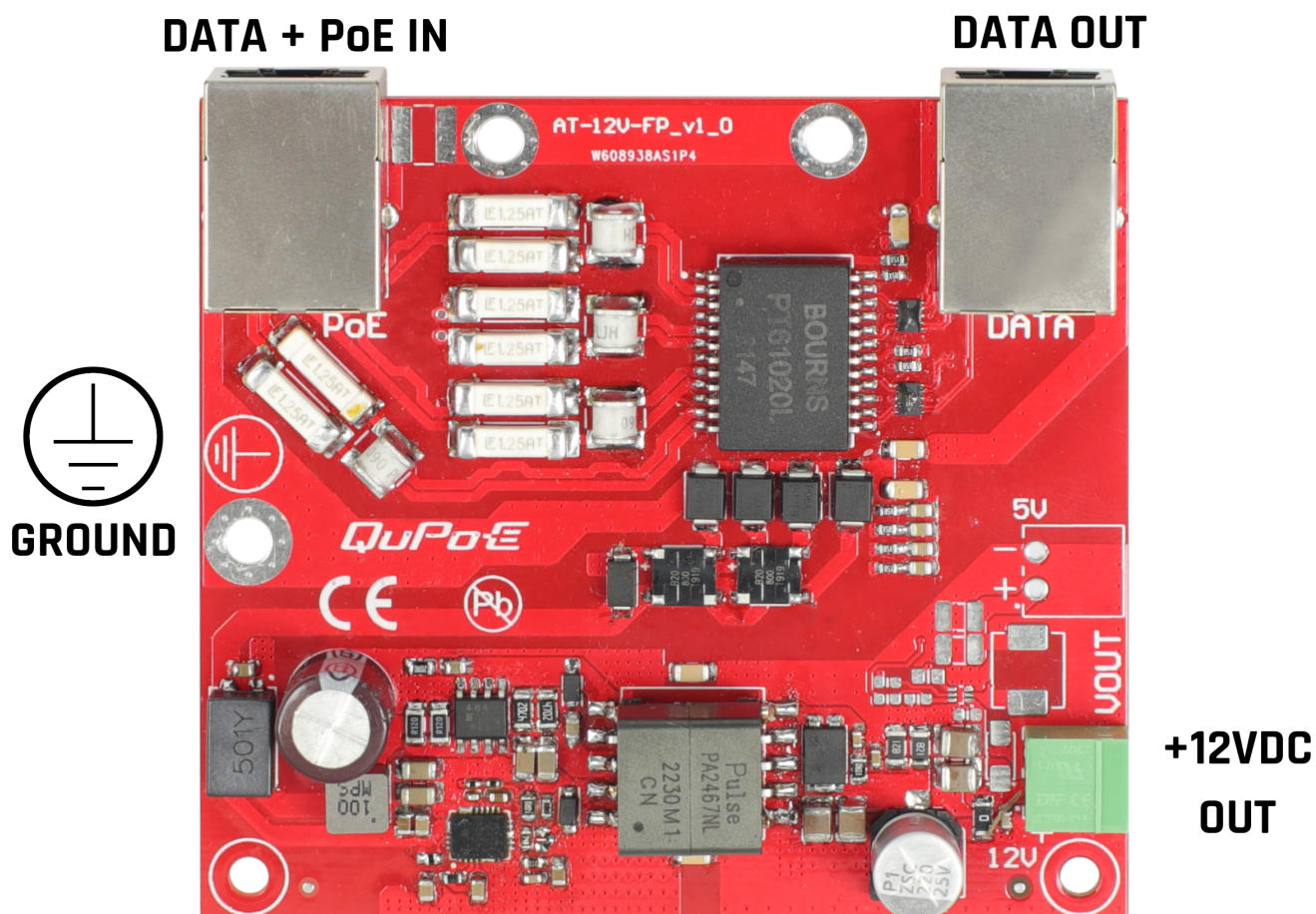
MADE IN EUROPE



## SAFETY FEATURES



## PORTS



## POE SPECIFICATION

IEEE STANDARD	IEEE 802.3ab 1000Base-T Gigabit Ethernet IEEE 802.3at PoE (Power over Ethernet)
POE IN	Powered from PoE in, IEEE802.3at 38-58V, 30W max for PD_802.3AT Supports both PoE A mode or B mode
DC OUTPUT	PD_802AT 12V 25W
DATA OUT	RJ45 10/100/1000Base-T(X)

## MECHANICAL SPECIFICATION

### OPERATING TEMPERATURE

-40 ~ 80°C  
-40 ~ 176°F

### DIMENSIONS

85 x 79 x 17 mm  
3.35 x 3.11 x 0.67 inch

## PROTECTION

### EN61000-4-2 (ESD)

Level 4 (8kV contact, 15kV Air), Criteria B

### EN61000-4-3 (RS)

Level 3 (10V/m), Criteria A

### EN61000-4-4 (EFT)

Level 4 (4kV), Criteria A

### EN 61000-4-6 (CS)

Level 3, Criteria A or extended level

### EN 61000-4-5 (SURGE)

Level 5 (min 2kV), Criteria B (Telecommunication cables)  
2 kA 8/20  $\mu$ s  
1 kA 10/350  $\mu$ s

### GR-1089

YES

### ITU-T K.20

YES

### ITU-T K.21

YES

### IEC60950-1

YES

### EN62368-1

YES



**LIGHTING/SURGE/ESD PROTECTION REQUIREMENTS**

GDT elements, SIDAC Thyristor, High power TVS Diode and TVS Diode Array provide protection against lightning and High surge making the device ideal for outdoor applications and powering e.g. gateway devices, routers, etc...

**ISOLATION REQUIREMENTS**

The GDTs (Gas Discharge Tubes) are connected between the data pair (and not GD) to be compliant with the IEEE802.3 standard. A properly rated transformer provides the required isolation for IEEE 802.3 compliance.

**POWER FAULT REQUIREMENTS**

Series telecom fuses provide overcurrent protection that complies with the GR-1089, ITU K20/21, EN60950-1 power fault requirements.

## HOW TO CONNECT ACTIVE SPLITTER

