


# QuMax for Peplink MAX BR1 Pro 5G & CAT-20

**INTEGRATED MULTI-BAND 5G DIRECTIONAL ANTENNA + WIFI OMNI ANTENNA + GPS ANTENNA + PLACE TO INSTALL PEPLINK MAX BR1 PRO 5G & CAT-20 (ALL-IN-ONE)**

QuMax all-in-one antenna for Peplink MAX BR1 Pro 5G & CAT-20 router is dedicated to connections with long distance to base station. It has embedded directional 5G, Wi-Fi and GPS antenna. If you use MAX BR1 Pro 5G or CAT-20 with QuMax Omni antenna, you get an integrated complete solution with embedded router and multi band antennas in one enclosure. It is the first choice for fixed installations in industrial environment.

**5G****Wi Fi**  
DUALBAND  
2.4GHz  
5GHz**GPS**  
**617-6000MHz**  
**6 dBi**  
**DIRECTIONAL**  
**IP 67**  
**-40° TO +80°**

OUTDOOR ANTENNA WORKS IN ANY  
WEATHER CONDITIONS, IP67



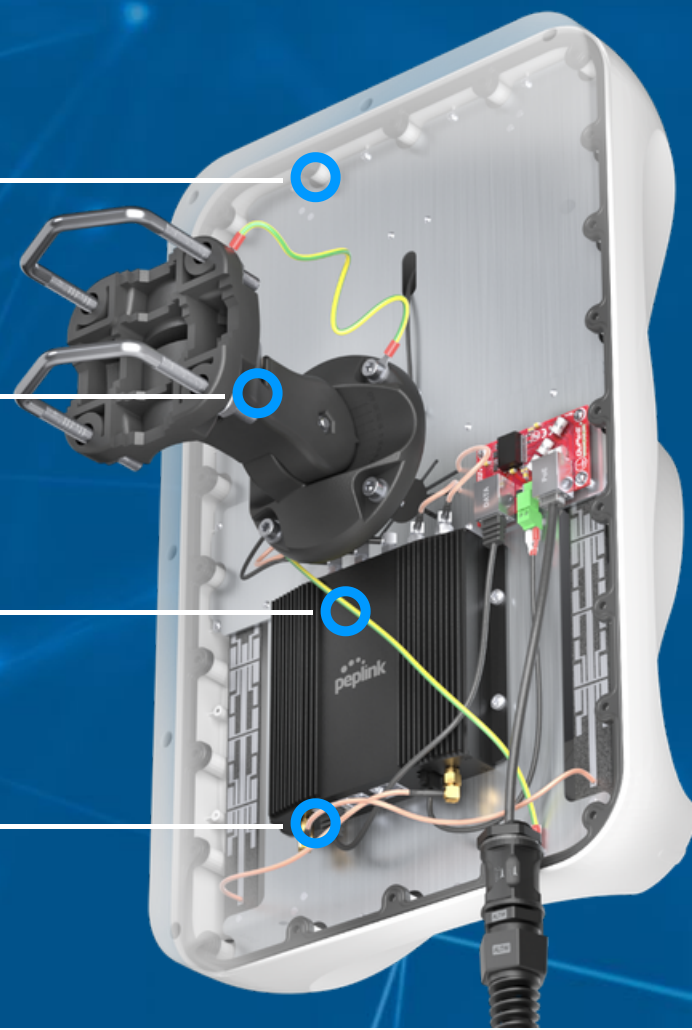
ANTENNA PERFECTLY MATCHED WITH  
THE PEPLINK MAX BR1 PRO 5G &  
CAT-20



ALL ANTENNAS AND PEPLINK ROUTER  
INTEGRATED IN ONE ENCLOSURE



MADE IN **EUROPE**



## 5G/LTE SPECIFICATION

FREQUENCY	617 - 960 MHz 1.7 - 2.7 GHz 3.3 - 4.6 GHz 4.7 - 6.0 GHz
SUPPORTED LTE BANDS	1, 2, 3, 4, 5, 7, 8, 9, 10, 12, 13, 14, 17, 18, 19, 20, 22, 25, 26, 27, 28, 29, 30, 33, 34, 35, 36, 37, 38, 39, 40, 41, 42, 43, 44, 46, 47, 48, 49, 52, 53, 65, 66, 67, 68, 69, 71, 85, 103, 106
SUPPORTED 5G BANDS	n1, n2, n3, n5, n7, n8, n12, n13, n14, n18, n20, n25, n26, n28, n29, n30, n34, n38, n39, n40, n41, n46, n47, n48, n53, n65, n66, n67, n71, n77, n78, n79, n80, n81, n82, n83, n84, n85, n86, n89, n90, n95, n97, n98, n100, n101, n256
GAIN	617 - 960 MHz : 6 dBi 1.7 - 2.7 GHz : 7 dBi 3.3 - 4.6 GHz : 7 dBi 4.7 - 6.0 GHz : 5.5dBi
VSWR	<2.00, max <3.00
BEAMWIDTH	80°/80° ±15°
POLARIZATION	Vertical
IMPEDANCE	50 Ω

## WI-FI SPECIFICATION

FREQUENCY	2.4 - 2.5 GHz 5.0 - 7.2 GHz
GAIN	2.4 - 2.5 GHz: 6dBi 5 GHz: 7.5dBi 7 GHz: 7.5dBi
VSWR	< 1.50, max < 2.00
BEAMWIDTH	360°/25° +/- 5°
POLARIZATION	Vertical
IMPEDANCE	50 Ω

## MECHANICAL SPECIFICATION

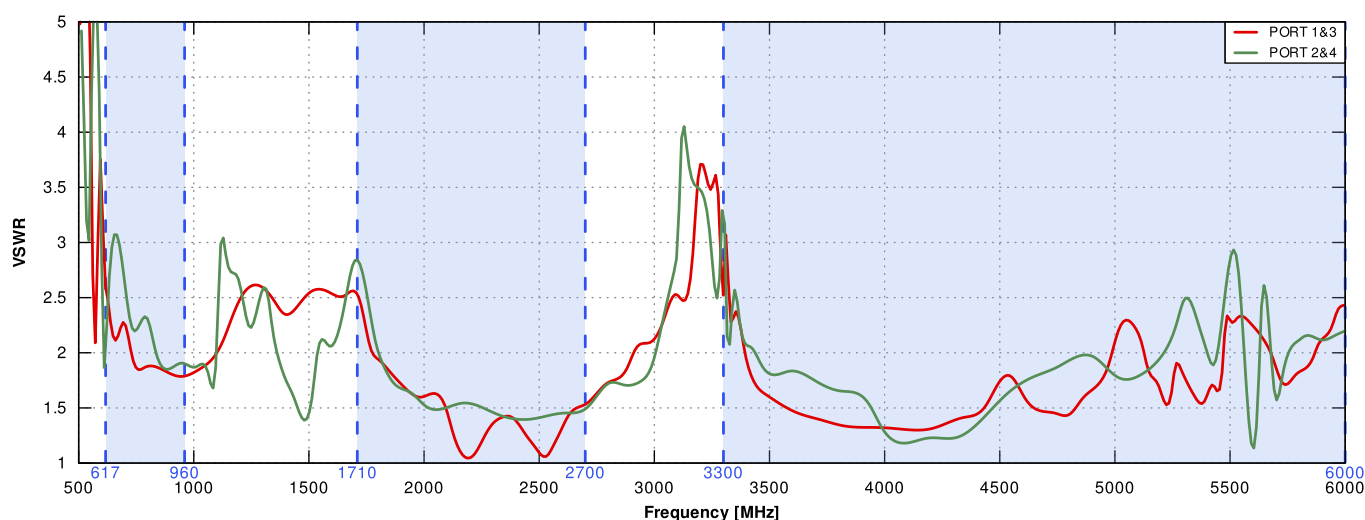
MATERIAL	BS, aluminum, PTFE, Fiberglass
INGRESS PROTECTION	IP67
CONNECTOR TYPE	RJ45
DIMENSIONS	486.0 x 292.2 x 210 mm 19.13 x 11.50 x 8.27 inch
WEIGHT	1.8 kg 3.97 lbs
OPERATING TEMPERATURE	From -40°C to 75°C From -40°F to 167°F

## **MOUNTING KIT**

DIMENSIONS	9.9 x 10.5 x 14.8 cm 3.9 x 4.13 x 5.83 inch
REGULATION RANGE	+/- 30°
MAST DIAMETER RANGE	25 - 60mm 0.98-2.36 inch
MATERIAL	Polyamide with fiberglass + galvanized steel U-Bolts
WEIGHT	0.87kg
MOUNTING PLACE	Wall or mast or ceiling

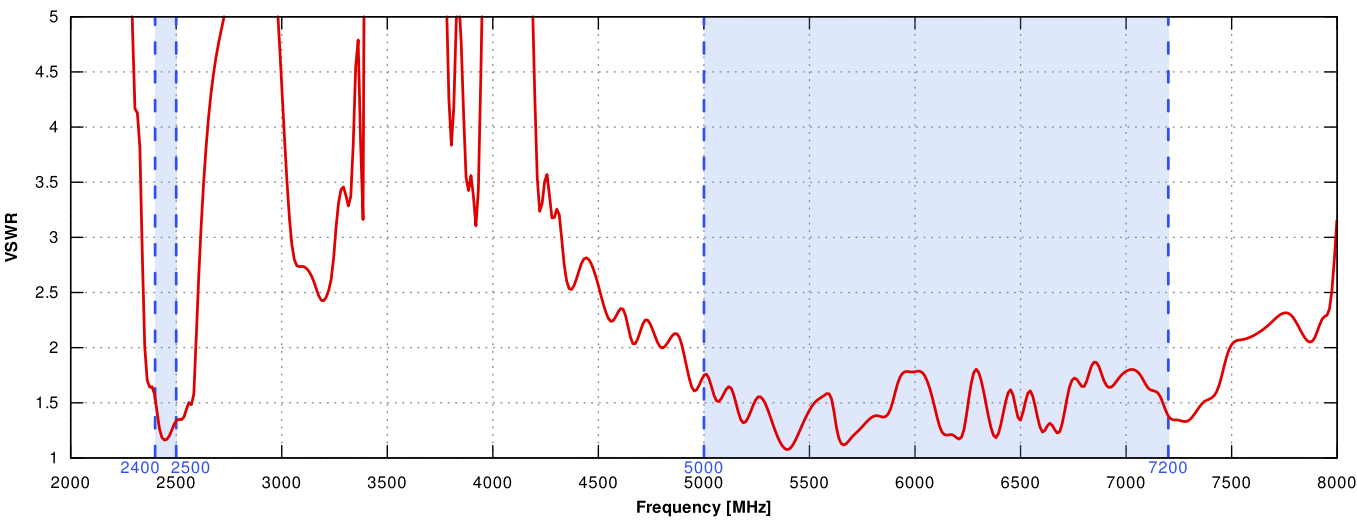
## **PLOTS**

VSWR for 5G/LTE antenna

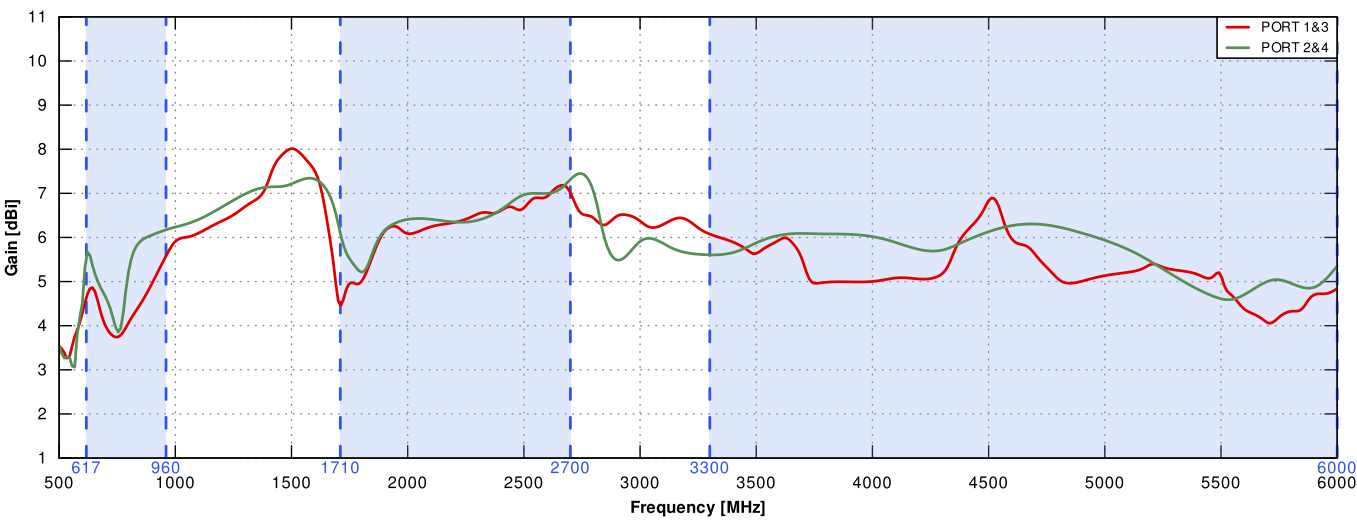




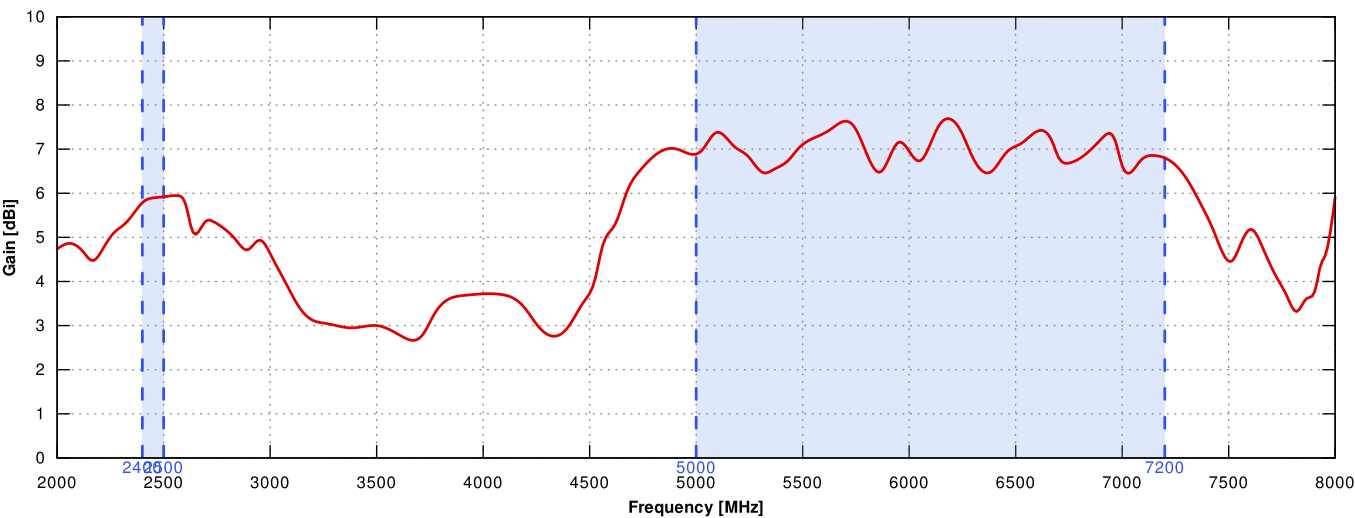
VSWR for Wi-Fi antenna



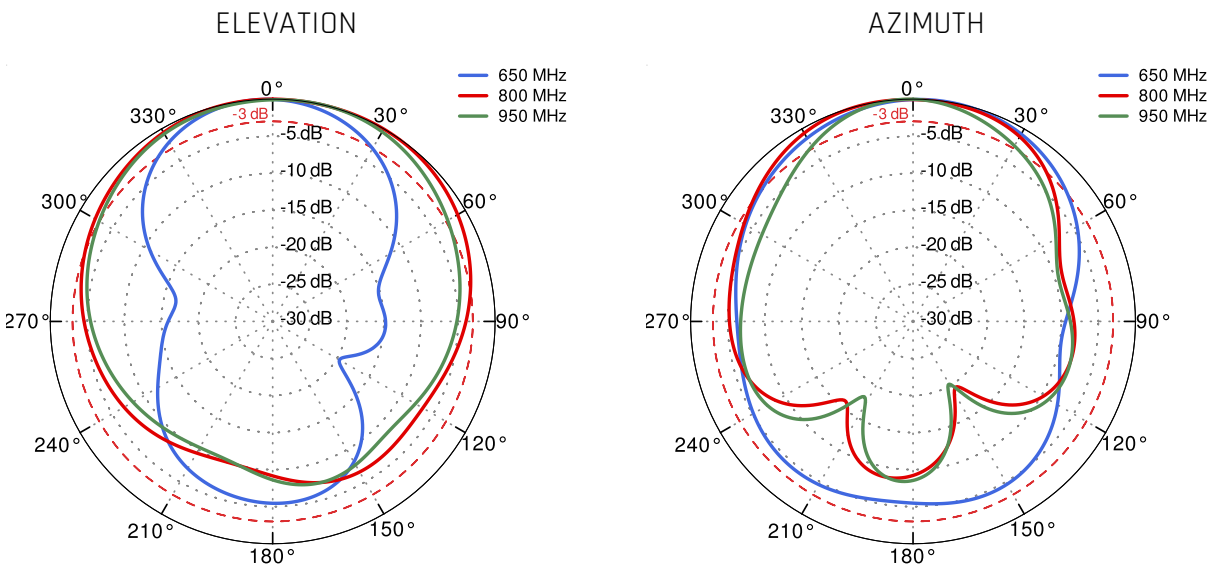
Gain for 5G/LTE antenna



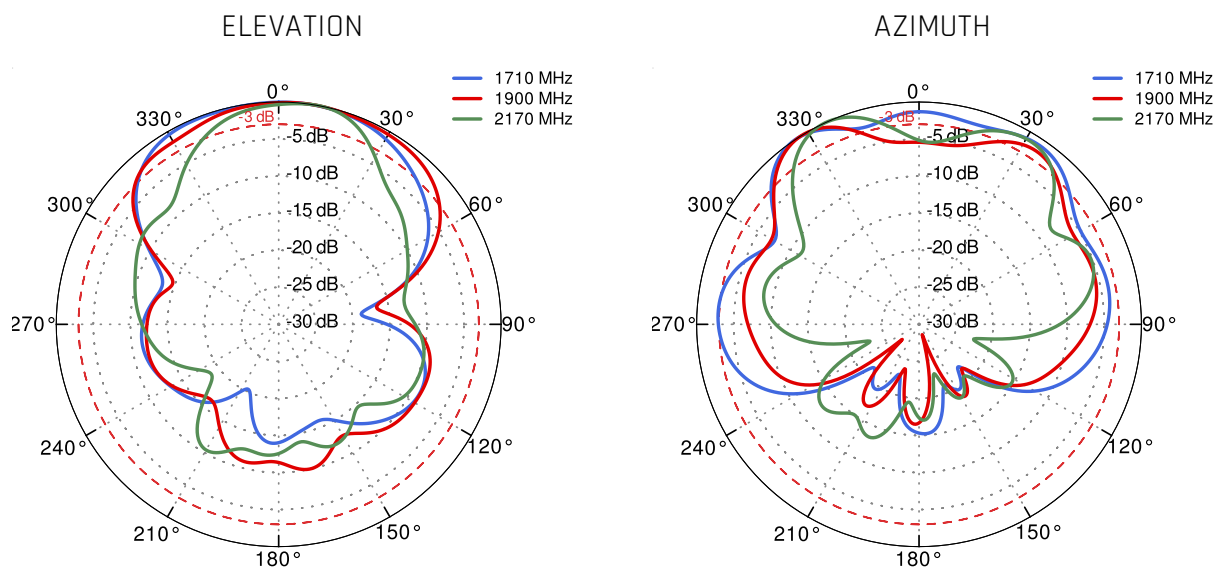
# Gain for Wi-Fi antenna



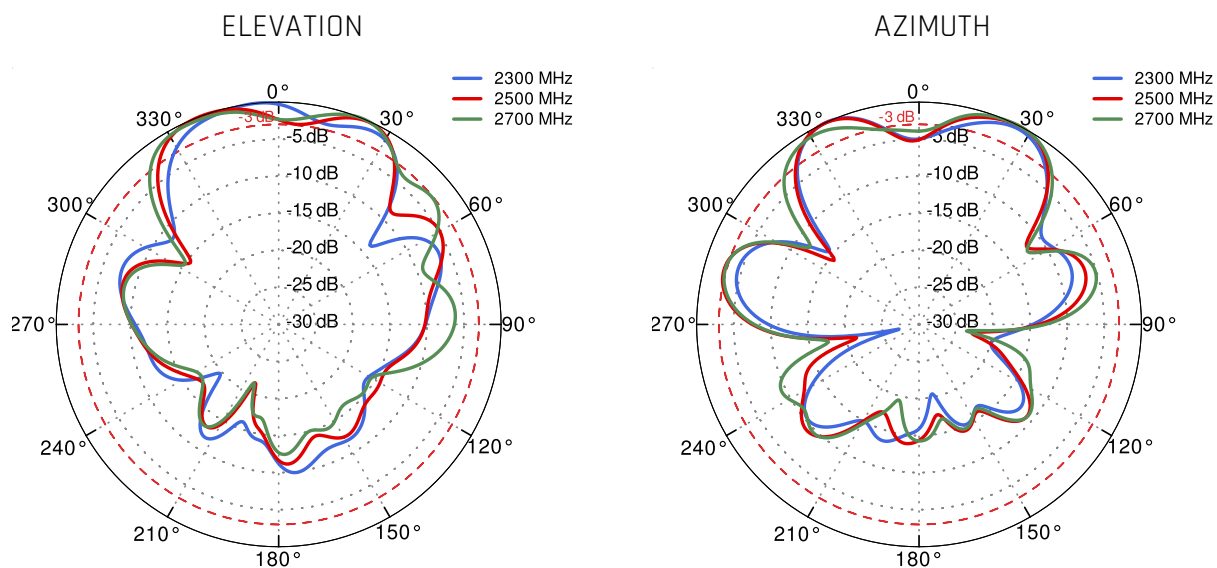
# 5G/LTE Port 1/3 from 650MHz to 950MHz



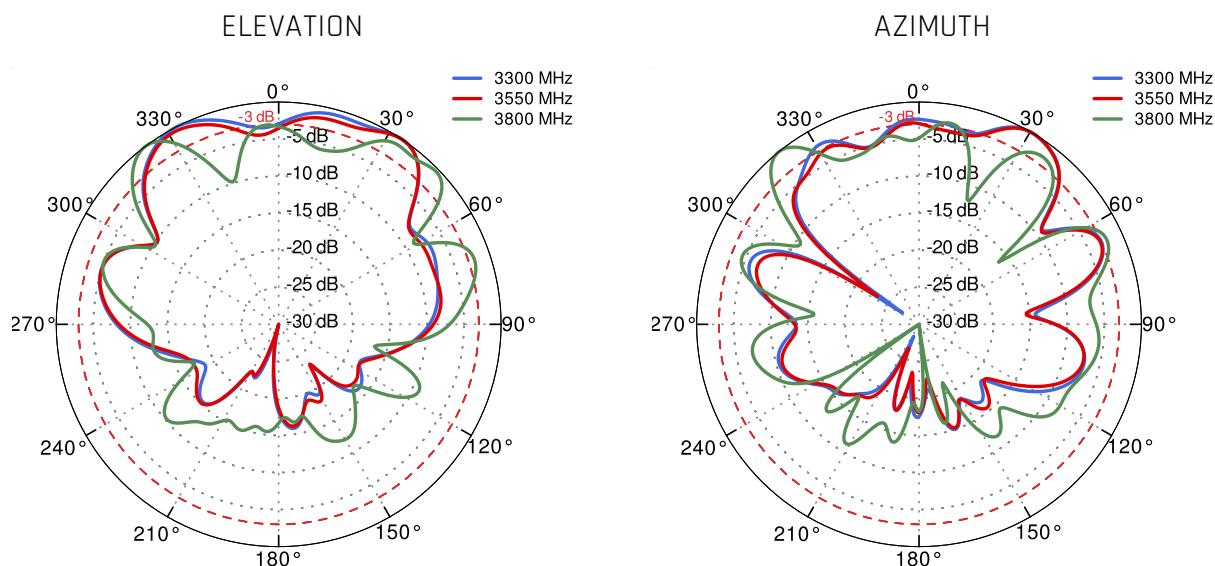
5G/LTE Port 1/3 from 1.71GHz to 2.17GHz



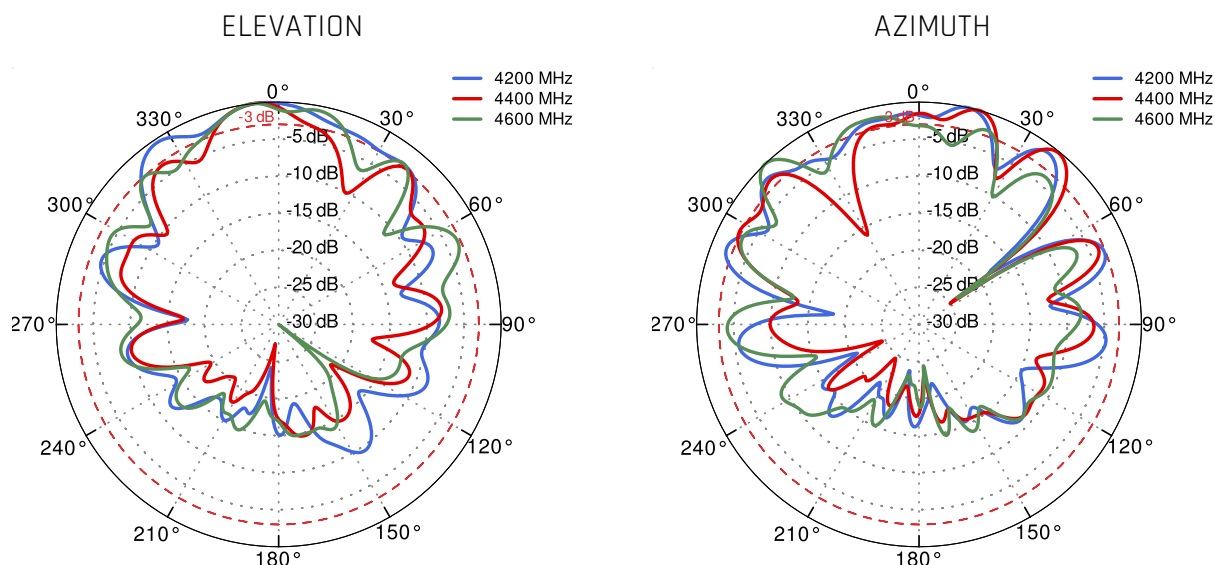
5G/LTE Port 1/3 from 2.3GHz to 2.7GHz



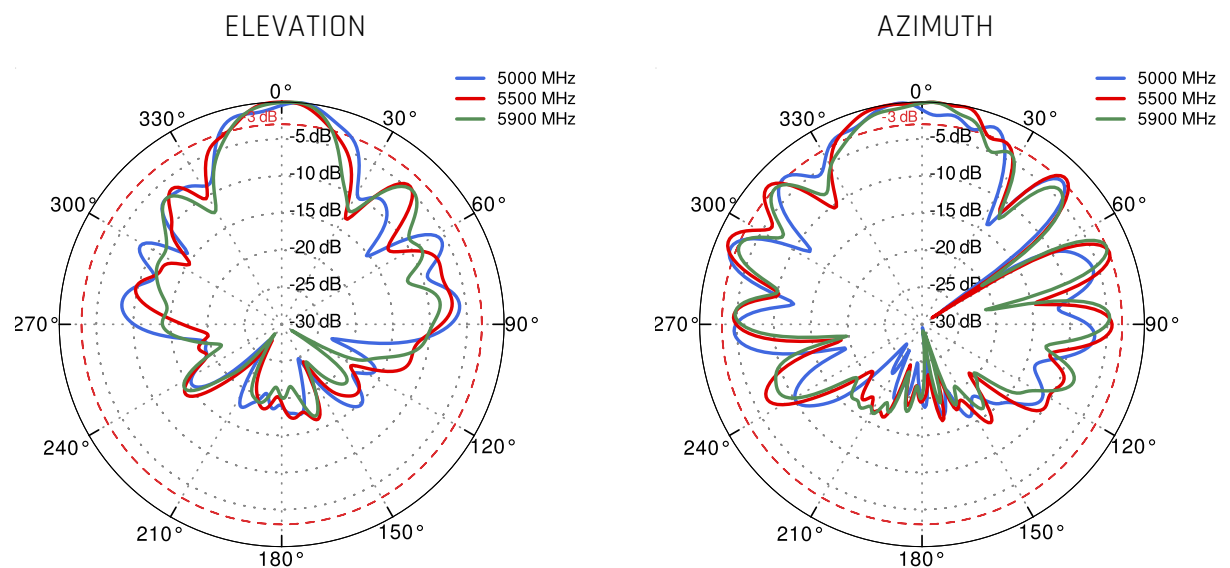
## 5G/LTE Port 1/3 from 3.3 GHz to 3.8 GHz



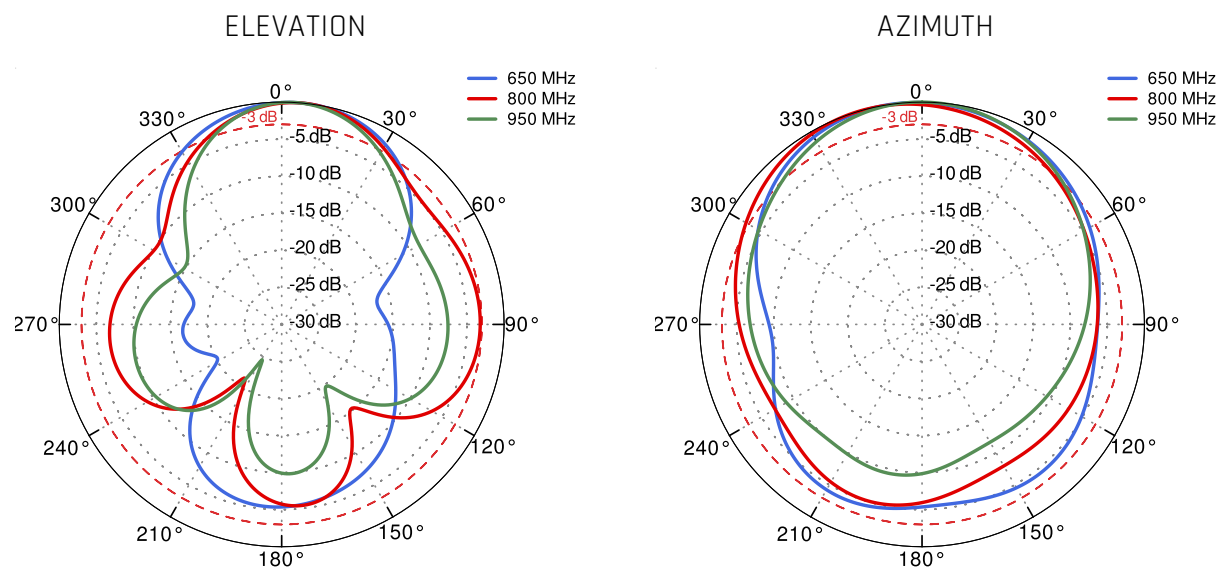
## 5G/LTE Port 1/3 from 4.2 GHz to 4.6 GHz



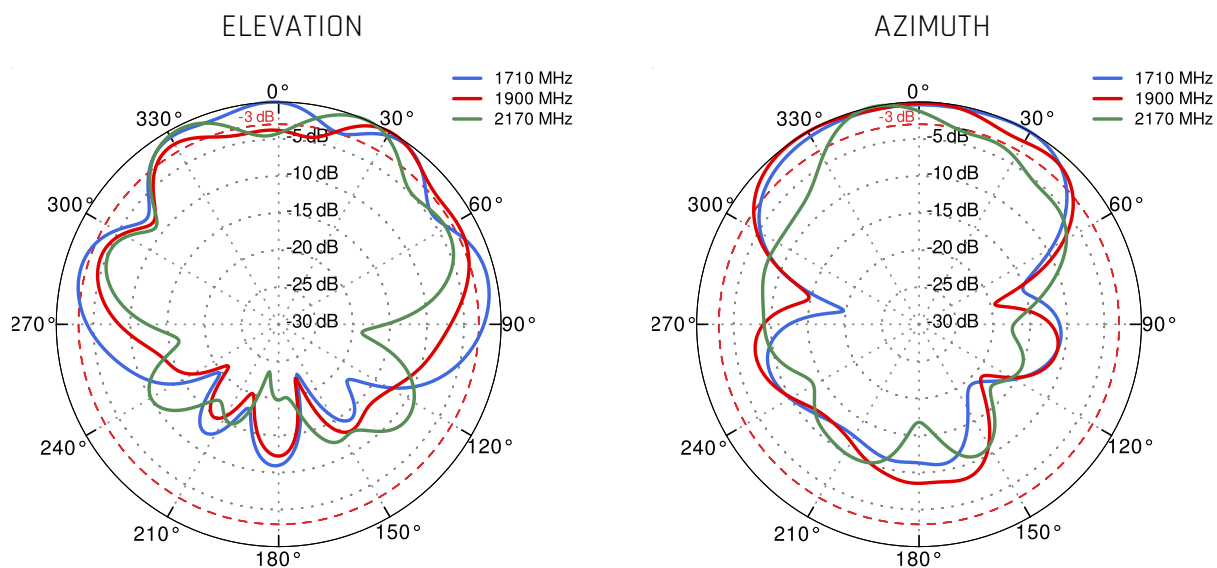
# 5G/LTE Port 1/3 from 5.0 GHz to 5.9 GHz



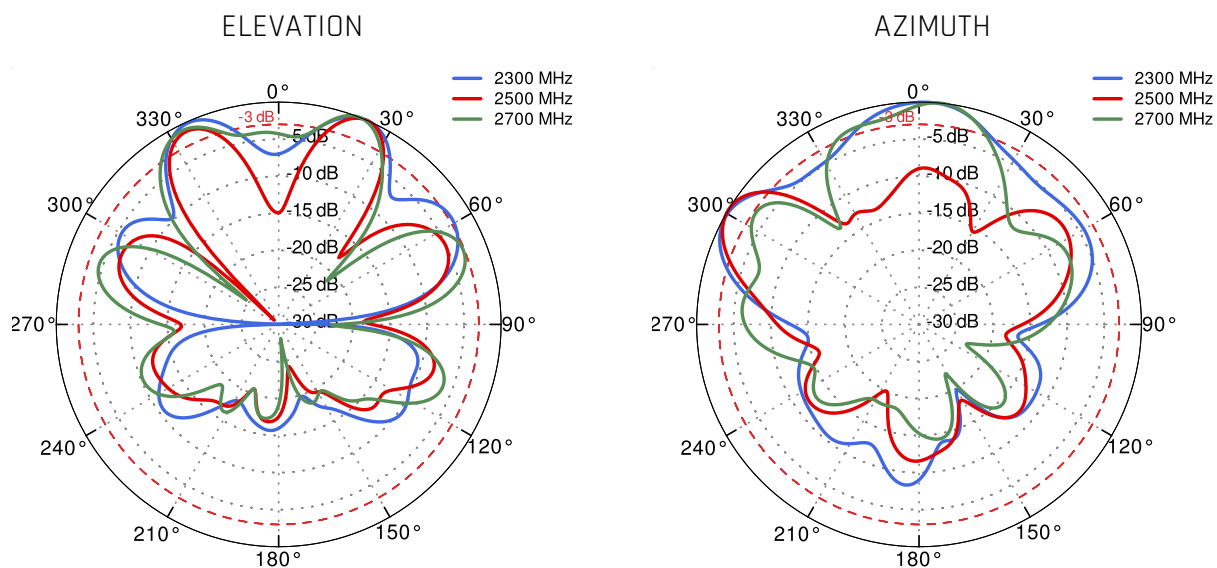
# 5G/LTE Port 2/4 from 650 MHz to 950 MHz



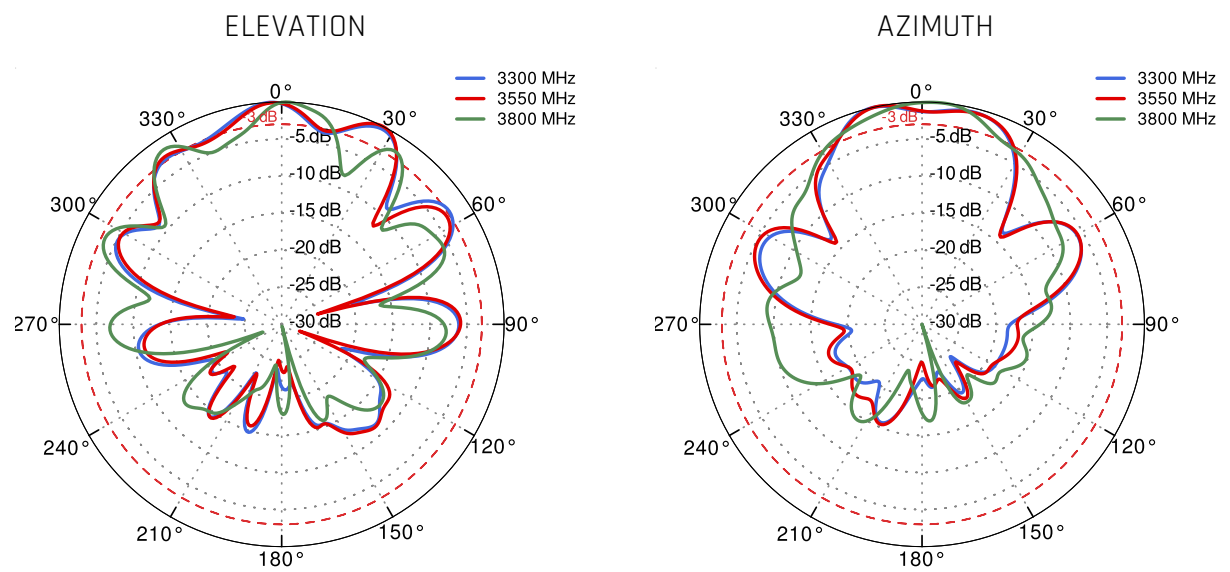
5G/LTE Port 2/4 from 1.71 GHz to 2.17 GHz



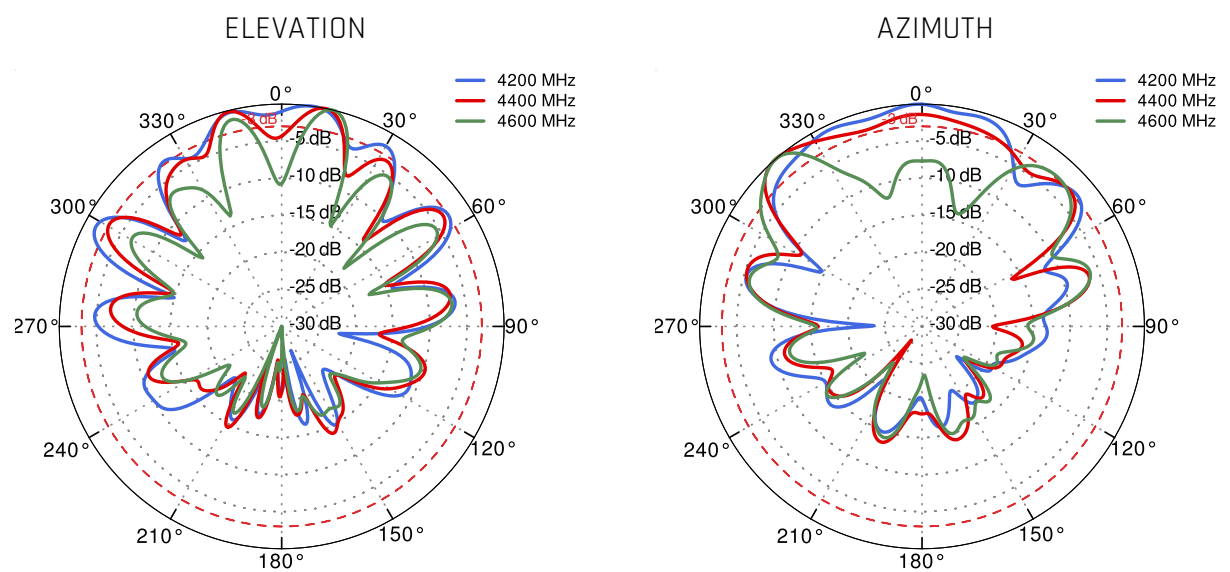
5G/LTE Port 2/4 from 2.3 GHz to 2.7 GHz



# 5G/LTE Port 2/4 from 3.3 GHz to 3.8 GHz

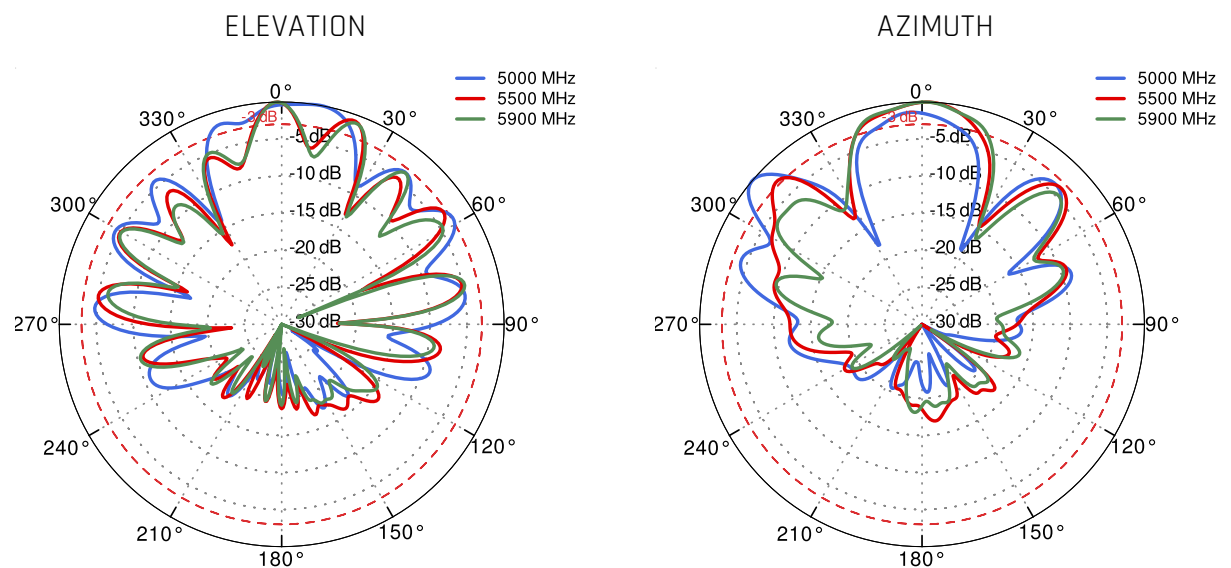


# 5G/LTE Port 2/4 from 4.2 GHz to 4.6 GHz

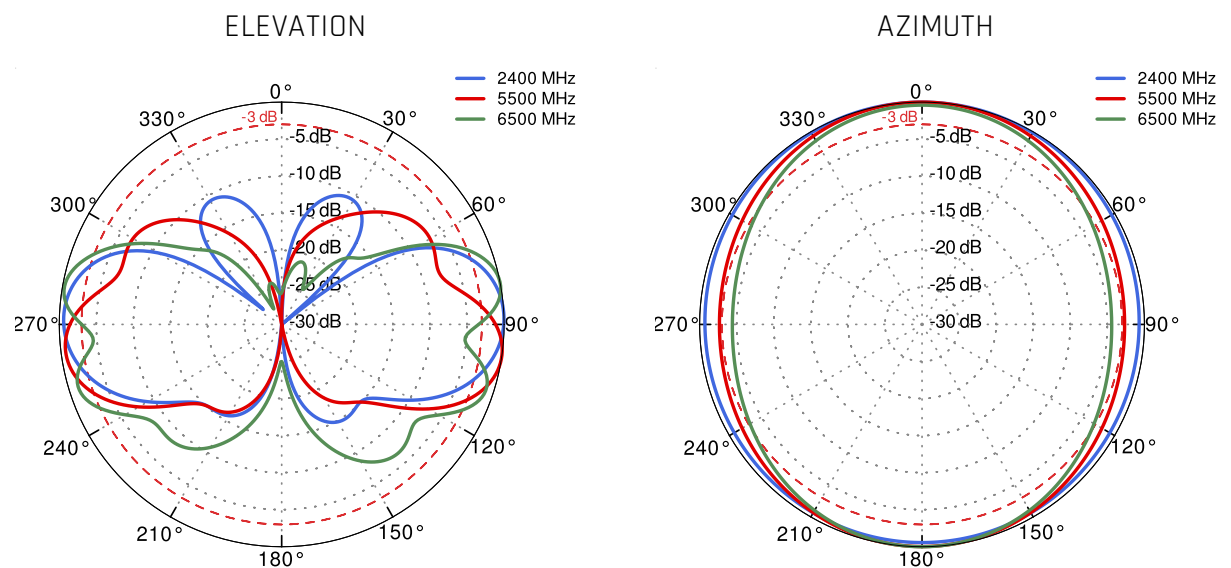




5G/LTE Port 2/4 from 5.0 GHz to 5.9 GHz

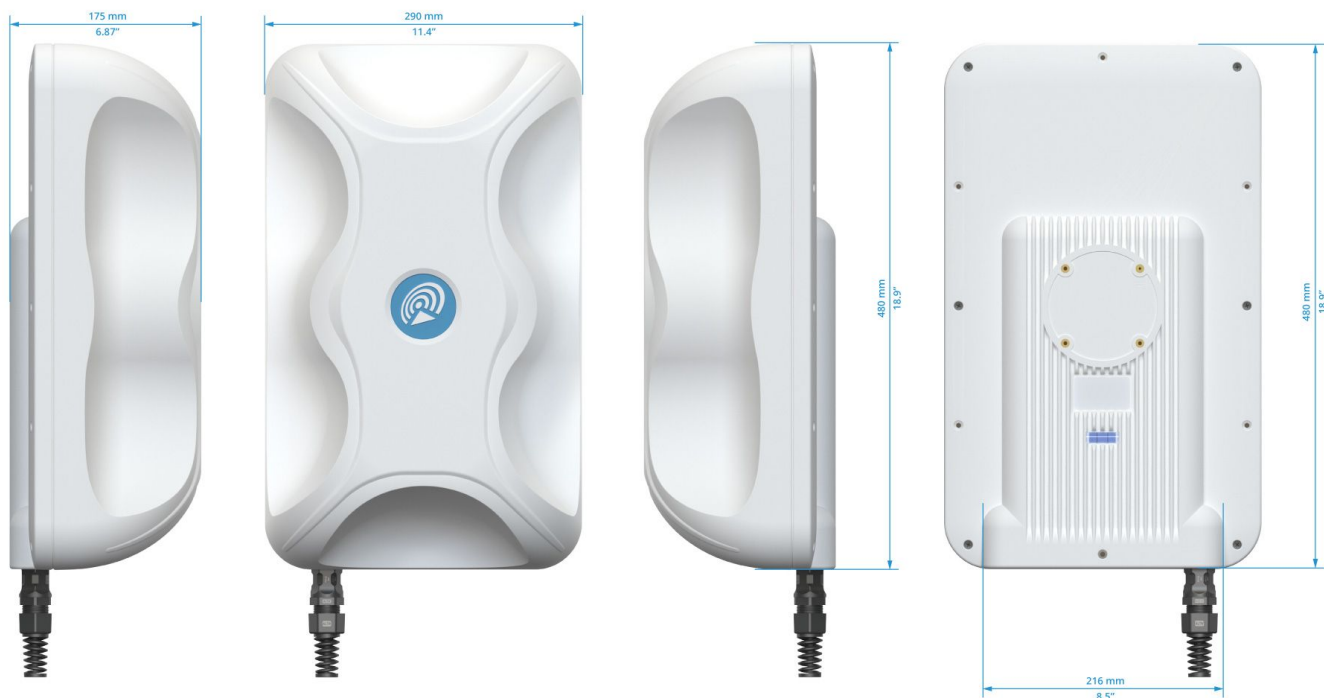


Wi-Fi From 2.4 GHz to 6.5 GHz





## DIMENSIONS



**Sales email:** sales@quwireless.com

**Support email:** support@quwireless.com

**Address:** Wireless Instruments Sp. z o.o., ul. Kościuszki 27, 52-116 Iwiny, Poland

**WWW.QUWIRELESS.COM**

**Tel:** +48 513 900 416

**Website:** www.quwireless.com

